



# Wimmera Project

## Historic Heritage Assessment



Community Information Session #2  
24 March 2021

## ACKNOWLEDGEMENT OF COUNTRY

We would like to acknowledge the traditional custodians of the land, and pay our respects to Elders past, present and future. We celebrate and respect their continuing culture and connection to the land.



# Purpose

## PURPOSE

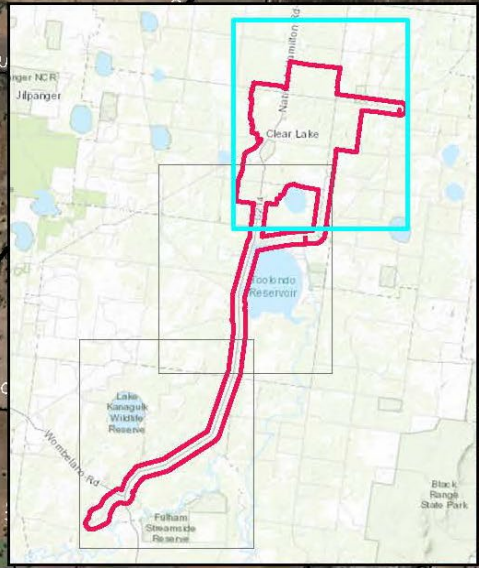
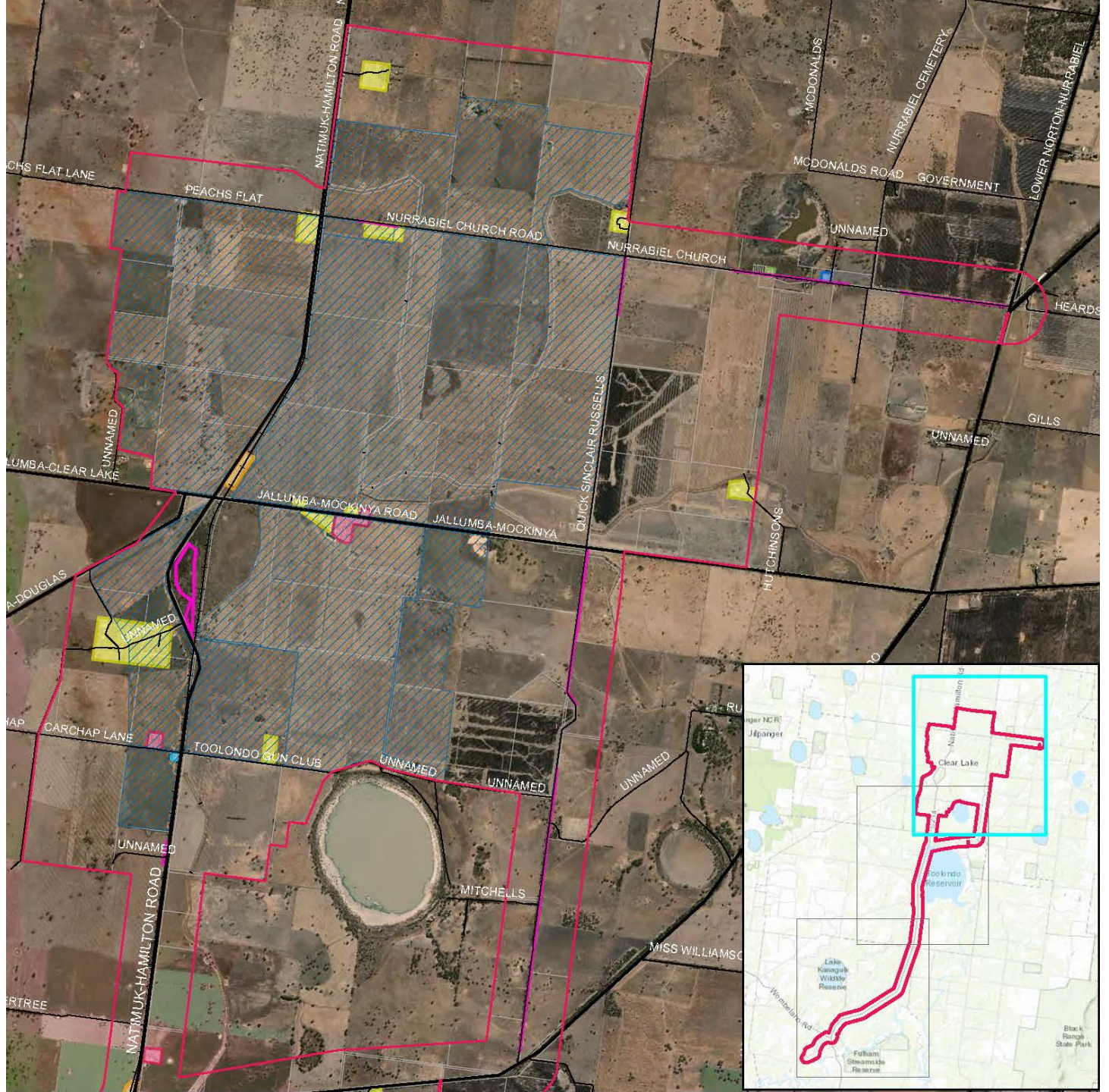
The purpose of a Historical Heritage Assessment is to:

- Provide an **overview** on the potential places or objects of historic heritage significance
- Historic heritage significance can be at a **local, State** or **Commonwealth** level
- Provide **avoidance, mitigation** and **management** recommendations to the project

# Historic Heritage Survey

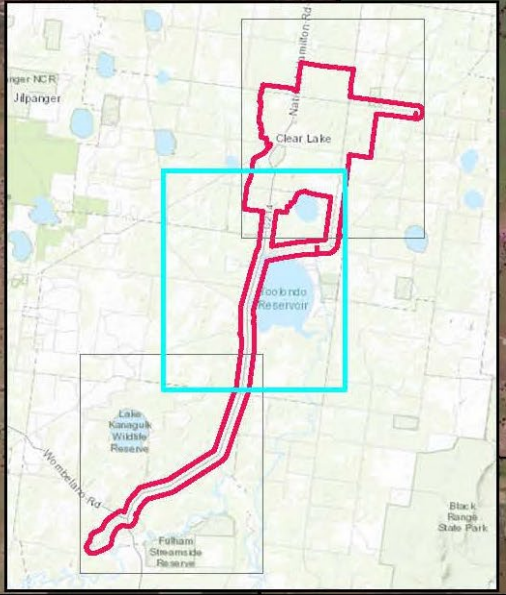


# Survey coverage



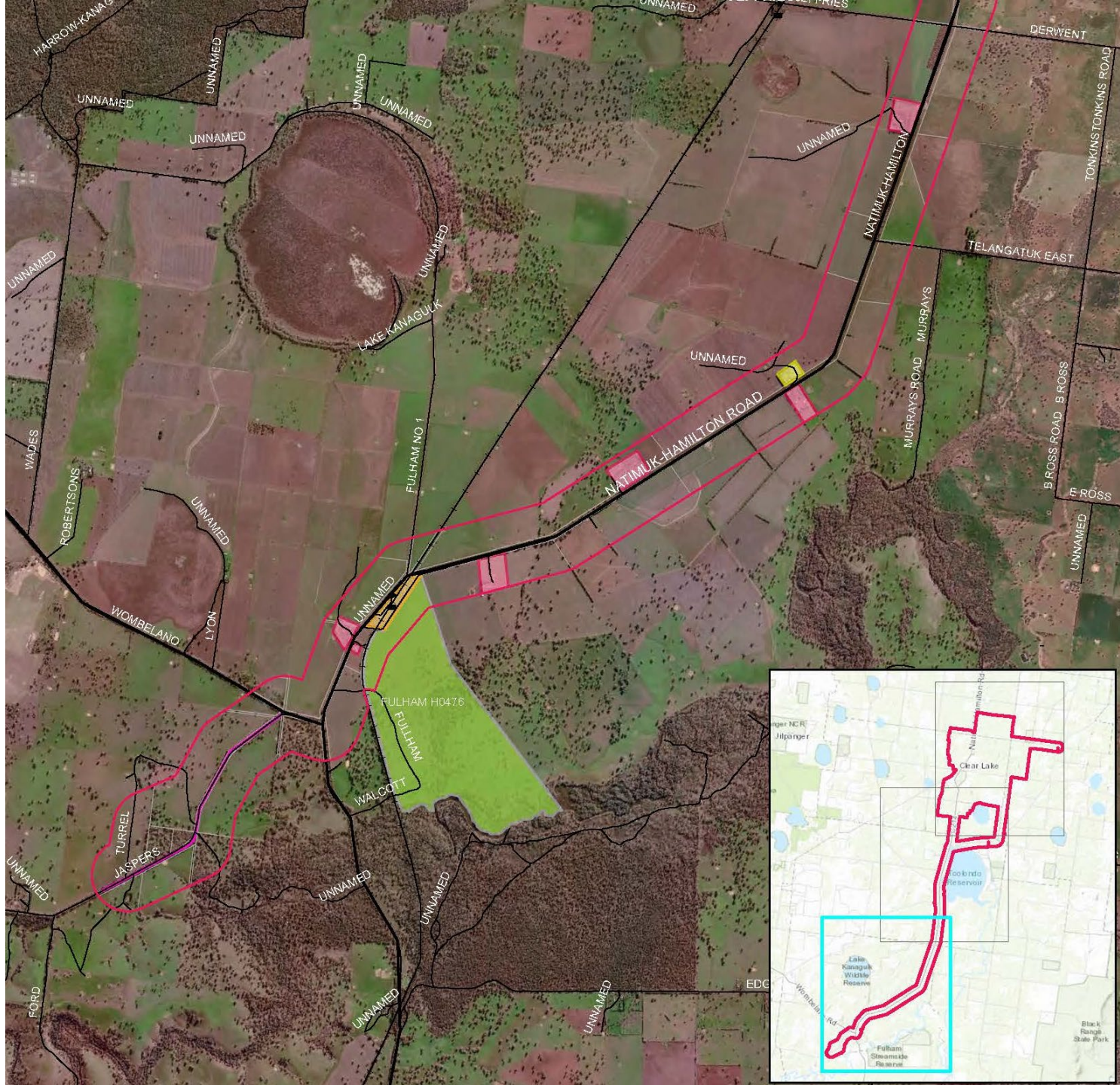


# Survey coverage





# Survey coverage



# Places

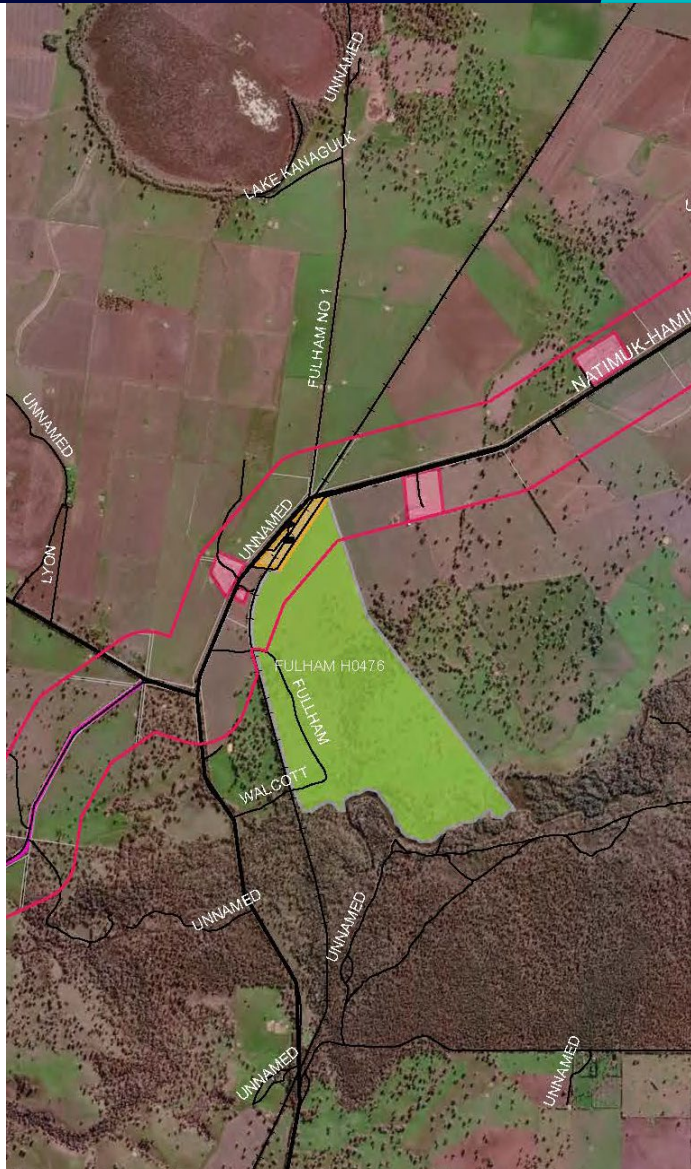


# Mount Talbot Homestead



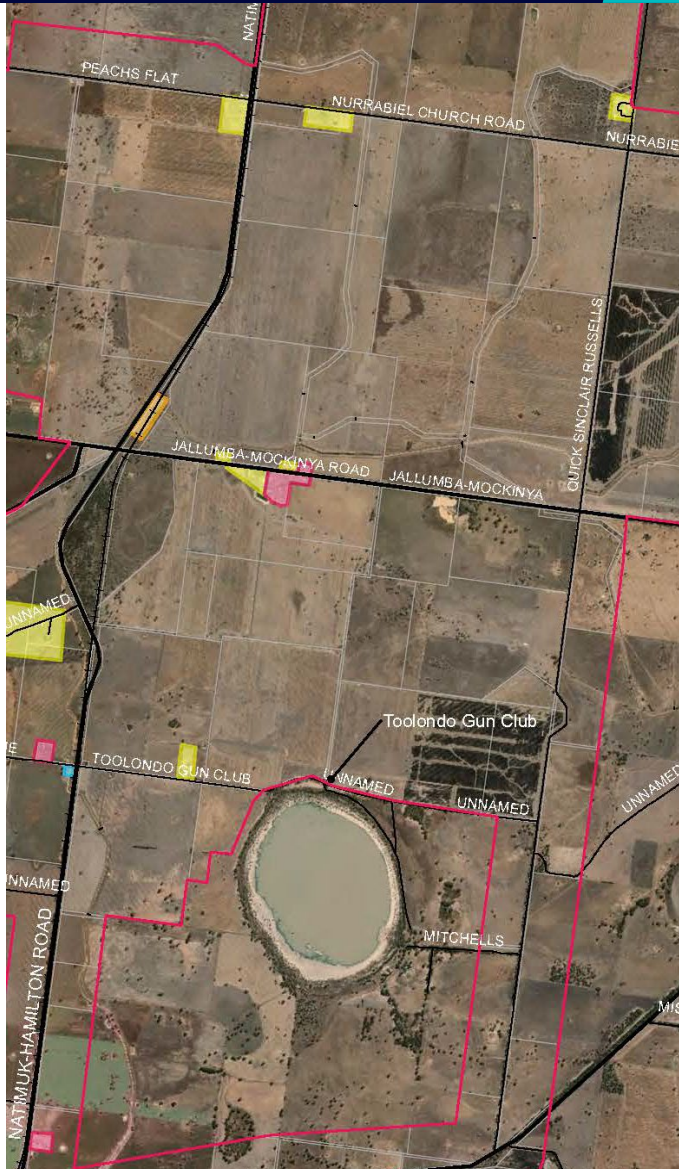


# Fulham





# Wimmera Mallee Stock and Domestic Channel System





# Nurrabel Wesleyan Methodist Church and Nurrabel Primary School No. 2279





# Carchap Primary School No. 2816





# Former Balmoral rail line



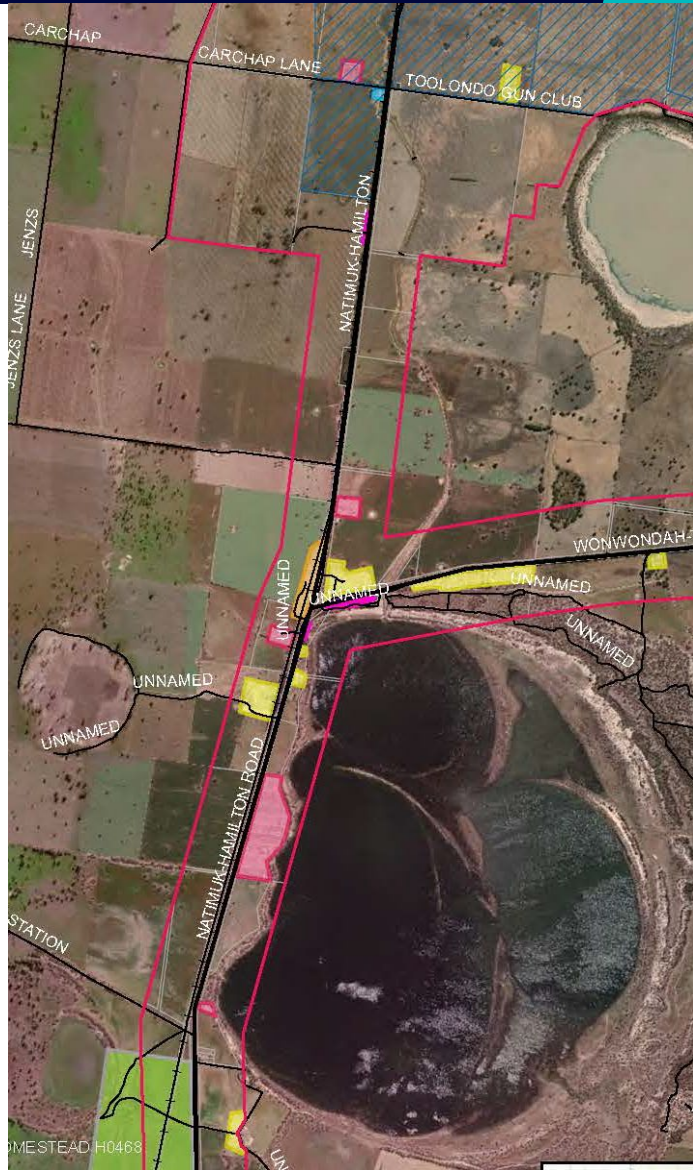


# Former Jallumba Station



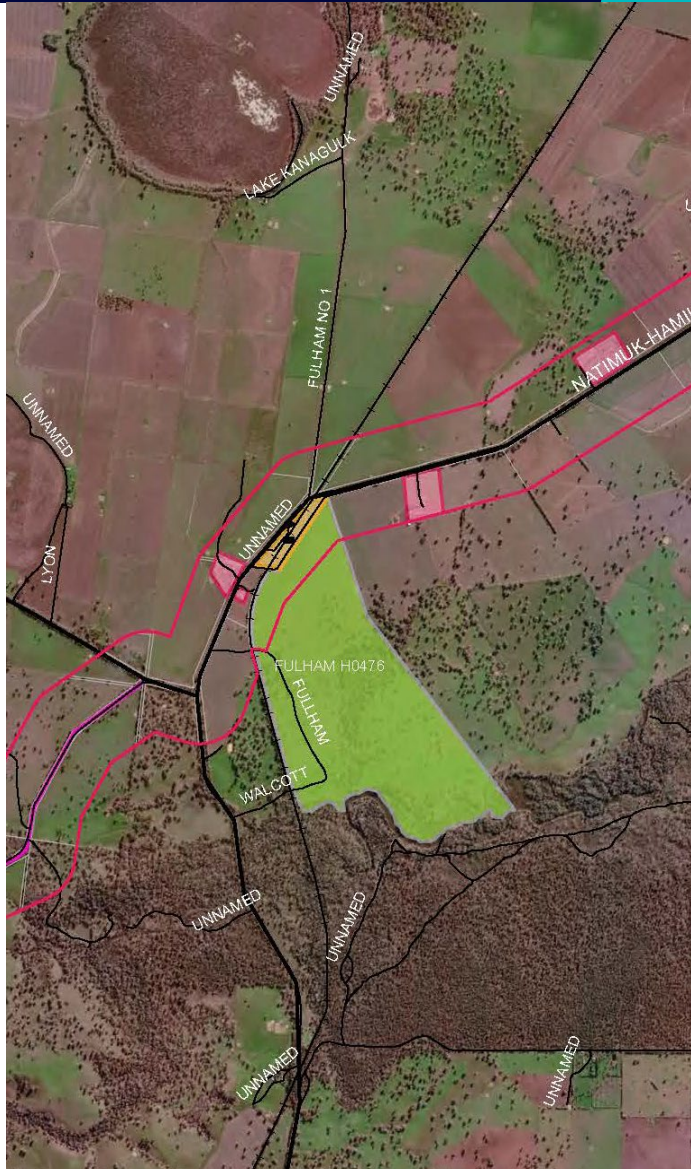


# Former Toolondo Station





# Former Kanagulk Station



# Next Steps

# Historical Heritage Assessment

Further survey to address gaps:

- Former Toolondo Station
- Former Kanagulk Station
- Nurrabel Primary School No. 2279
- Nurrabel Wesleyan Methodist Church
- General gaps in survey coverage



EWEN & RACHEL McDONALD

SELECTED THIS LAND  
AND BUILT THEIR HOME  
ON THIS SITE IN 1874

ERECTED BY THEIR GREAT GRAND SON  
NOEL McDONALD IN 1974



Thank you