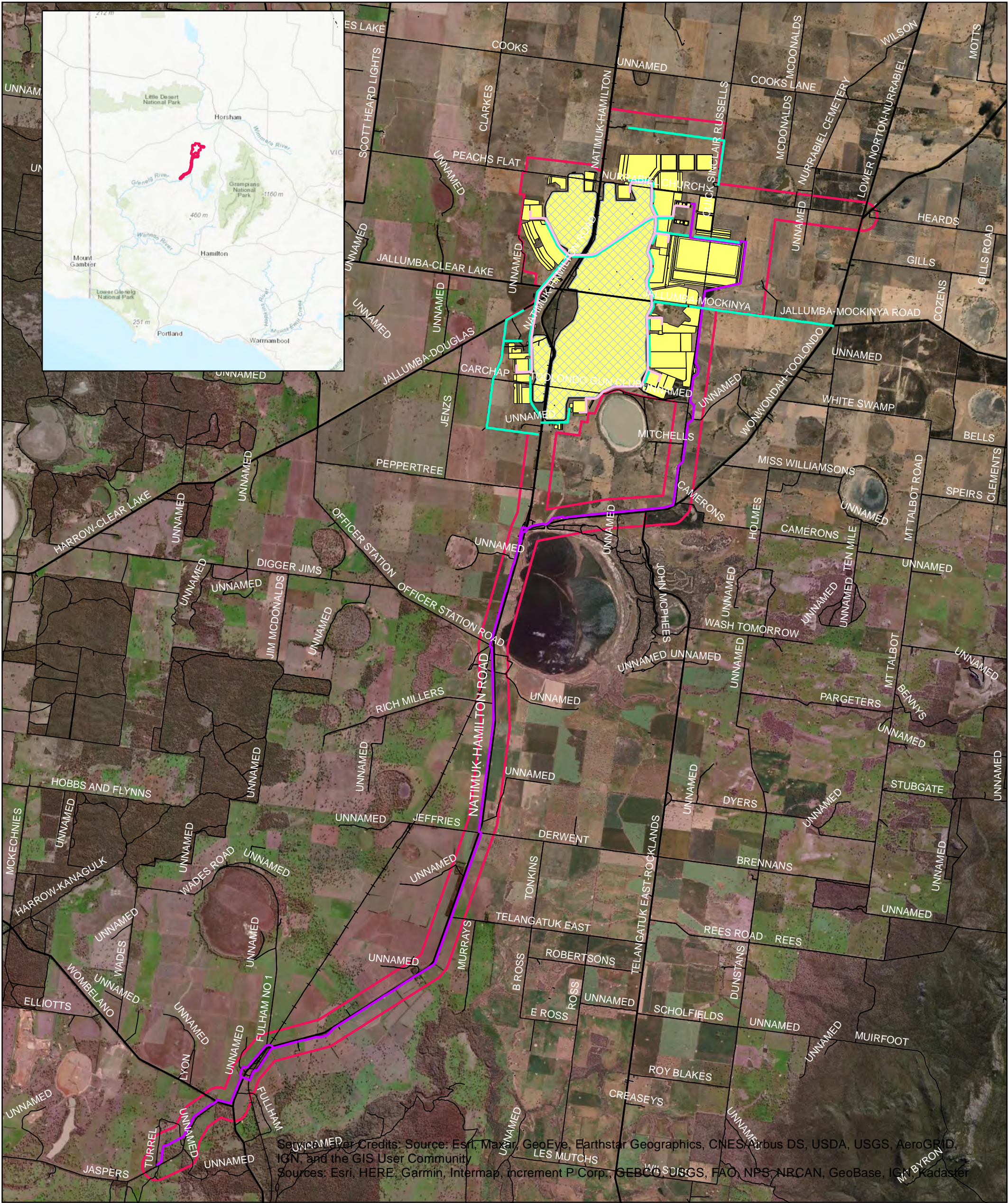




LEGEND  
Study area





LEGEND

- Process water pipeline
- Proposed powerline
- Proposed pipeline
- Mine pit footprint
- Mine development footprint
- Study area

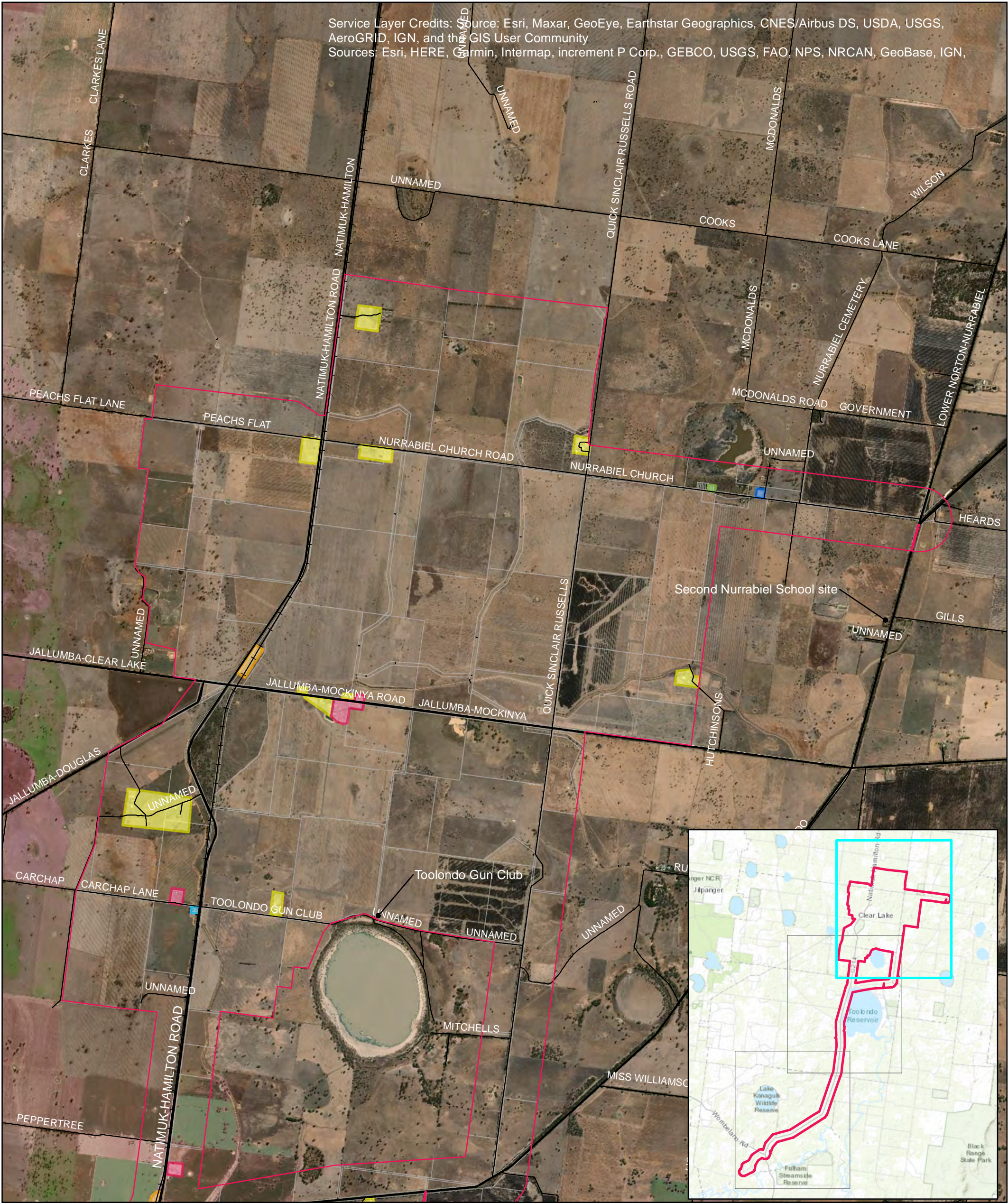




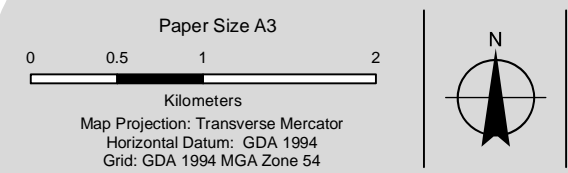
- LEGEND
- Study area
  - VHR Place



Service Layer Credits: Source: Esri, Maxar, GeoEye, Earthstar Geographics, CNES/Airbus DS, USDA, USGS, AeroGRID, IGN, and the GIS User Community  
Sources: Esri, HERE, Garmin, Intermap, increment P Corp., GEBCO, USGS, FAO, NPS, NRCAN, GeoBase, IGN,



- LEGEND**
- Study area
  - Nurrabiel Primary School No. 2279 (1880 -1952)
  - Nurrabiel Wesleyan Methodist Church (1884 - 1990s)
  - Carchap Primary School No. 2816 (1887 - 1927)
  - Balmoral rail line station 1910s - 1980s
  - Pre World War II structures - current
  - Structures 1950s/1960s -current
  - VHR Place - structures 1840s - current



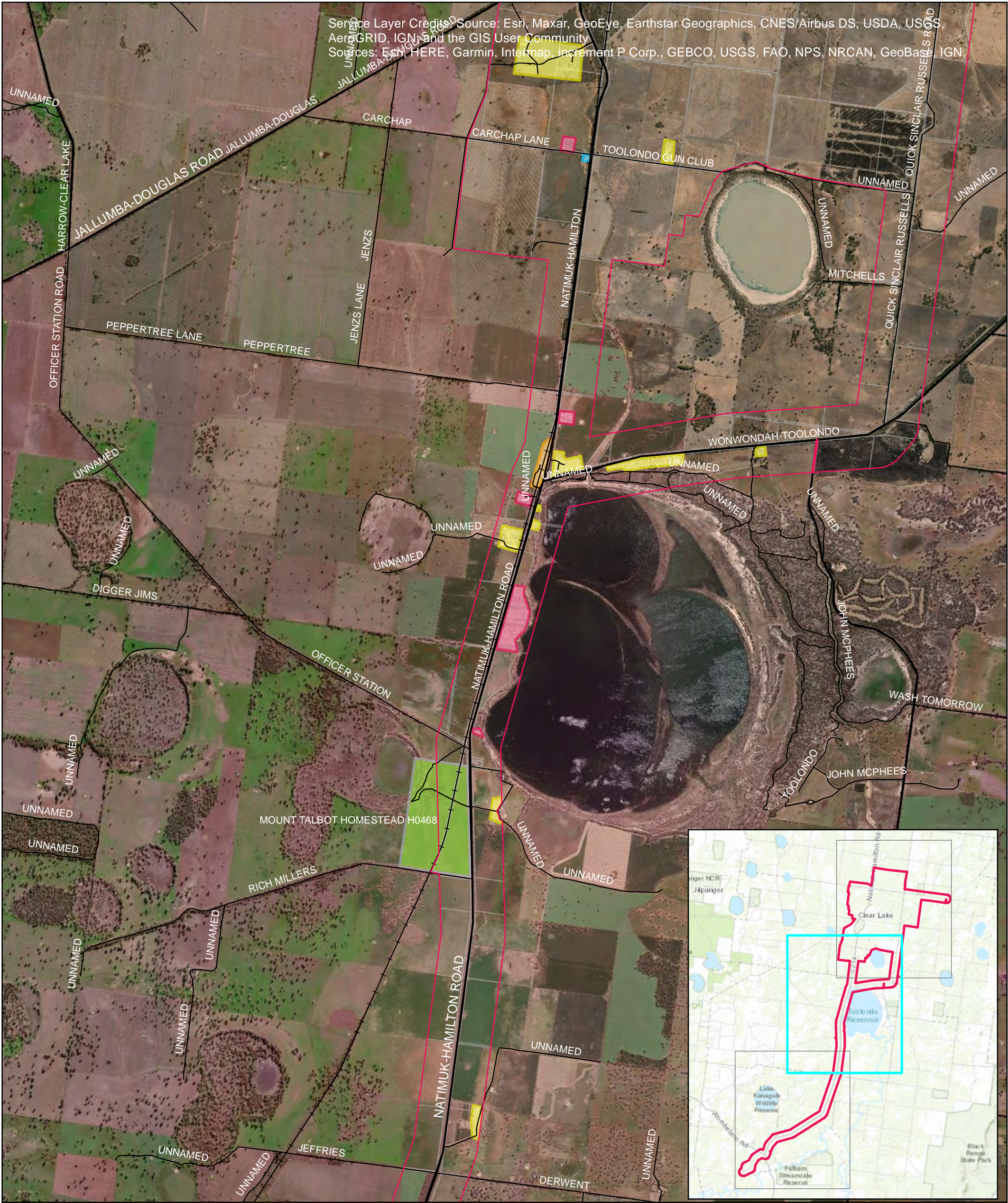
Iluka Resources Limited  
Wimmera Project

Job Number 31-36122  
Revision B  
Date 11 Feb 2021

Built features in the study area

Figure 6

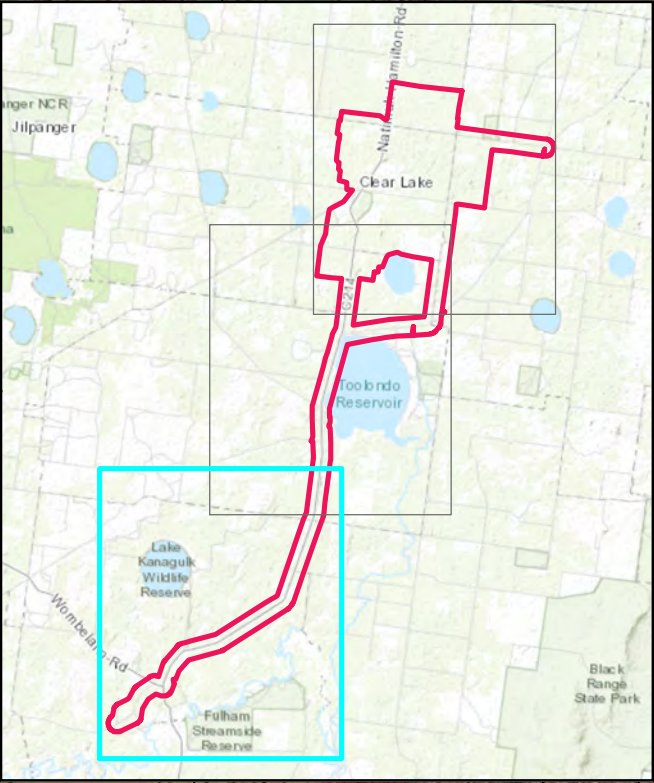
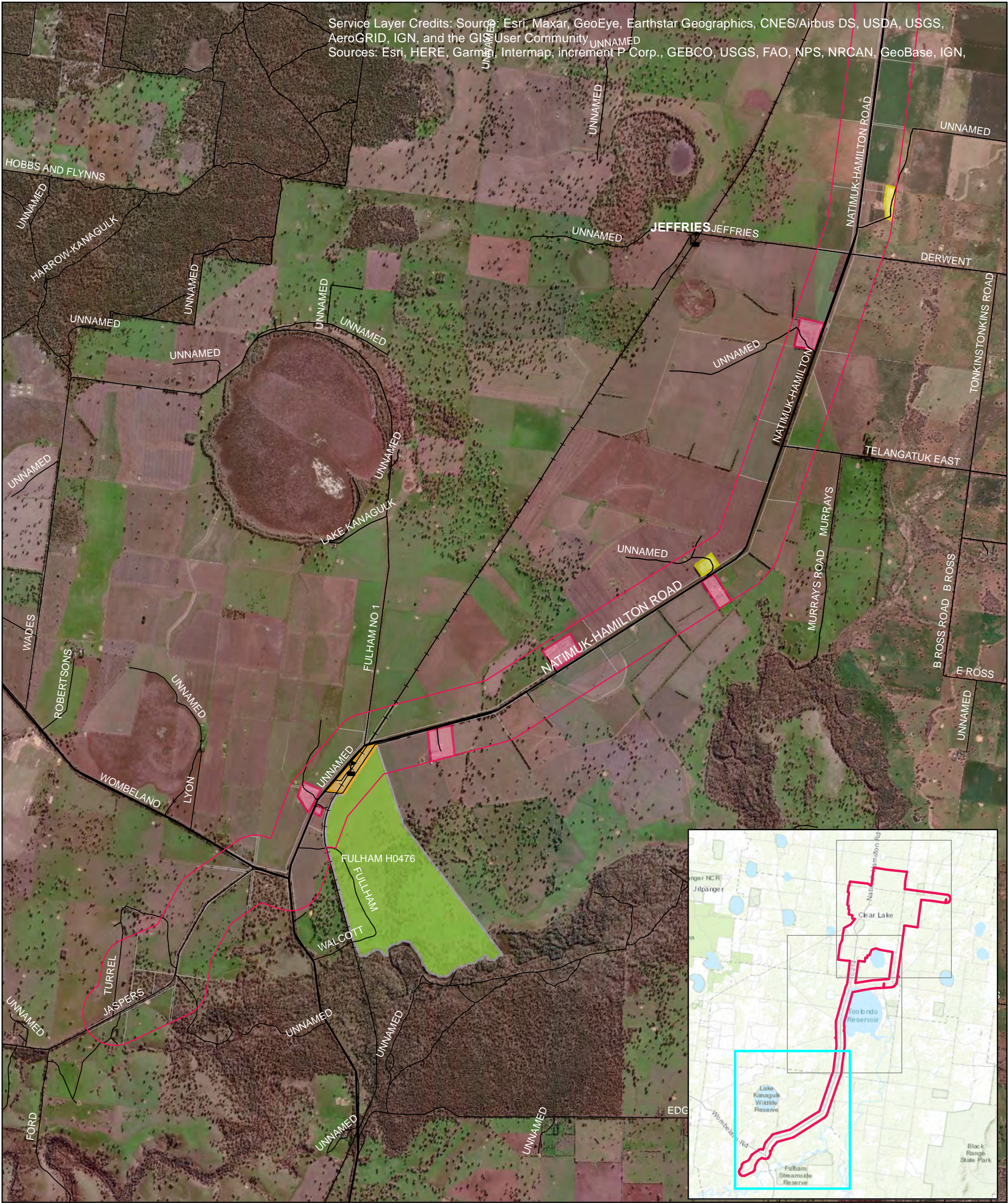




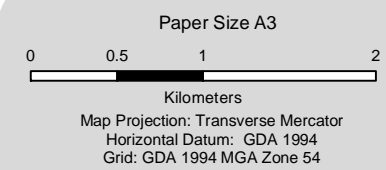
- LEGEND
- |  |   |  |  |  |  |
|--|---|--|--|--|--|
|  | Study area  |  | Balmoral rail line station 1910s - 1980s |  | VHR Place - structures 1840s - current |
|  | Nurrabil Primary School No. 2279 (1880 -1952)     |  | Pre World War II structures - current    |  |  |
|  | Nurrabil Wesleyan Methodist Church (1884 - 1990s) |  | Structures 1950s/1960s -current          |  |  |
|  | Carchap Primary School No. 2816 (1887 - 1927)     |  |  |  |  |



Service Layer Credits: Source: Esri, Maxar, GeoEye, Earthstar Geographics, CNES/Airbus DS, USDA, USGS, AeroGRID, IGN, and the GIS User Community  
Sources: Esri, HERE, Garmin, Intermap, increment P Corp., GEBCO, USGS, FAO, NPS, NRCAN, GeoBase, IGN,



- LEGEND
- Study area
  - Balmoral rail line station 1910s - 1980s
  - Pre World War II structures - current
  - Structures 1950s/1960s -current
  - VHR Place - structures 1840s - current



Iluka Resources Limited  
Wimmera Project

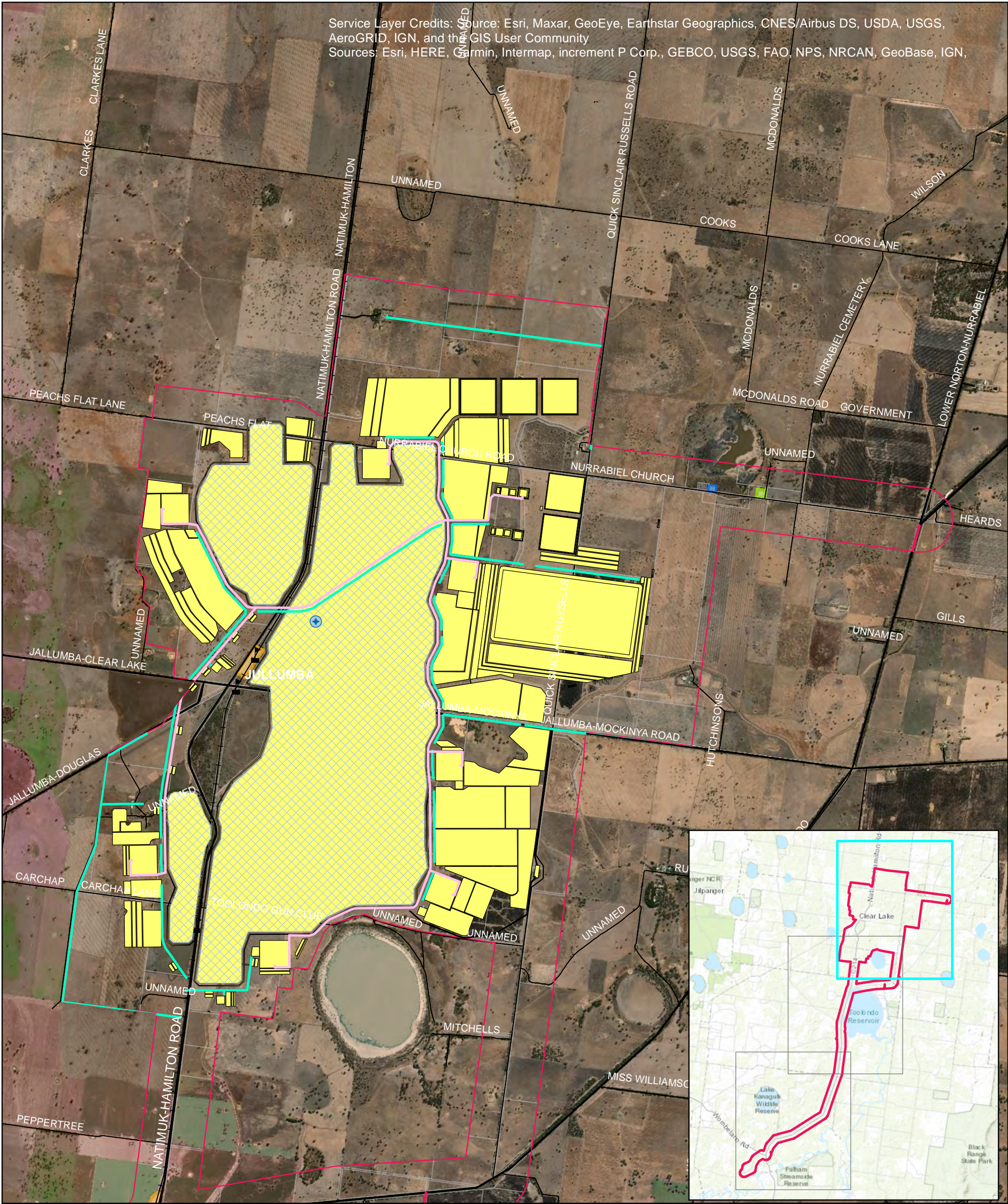
Job Number 31-36122  
Revision B  
Date 21 Jan 2021

Built features in the study area

Figure 8



Service Layer Credits: Source: Esri, Maxar, GeoEye, Earthstar Geographics, CNES/Airbus DS, USDA, USGS, AeroGRID, IGN, and the GIS User Community  
Sources: Esri, HERE, Garmin, Intermap, increment P Corp., GEBCO, USGS, FAO, NPS, NRCAN, GeoBase, IGN,



- LEGEND**
- |                        |                            |  |
|------------------------|----------------------------|--|
| Proposed pipeline      | Mine development footprint | Balmoral rail line station 1910s - 1980s |
| Process water pipeline | Study area                 | Nurrabiel Wesleyan Methodist Church      |
| Proposed powerline     |                            | Nurrabiel Primary School No. 2279        |
| Surveyor blaze         |                            | VHR Place                                |
| Mine pit footprint     |                            |  |

Paper Size A3  
0 0.5 1 2  
Kilometers  
Map Projection: Transverse Mercator  
Horizontal Datum: GDA 1994  
Grid: GDA 1994 MGA Zone 54



Iluka Resources Limited  
Wimmera Project

Job Number 31-36122  
Revision B  
Date 11 Feb 2021

Impact assessment

Figure 12

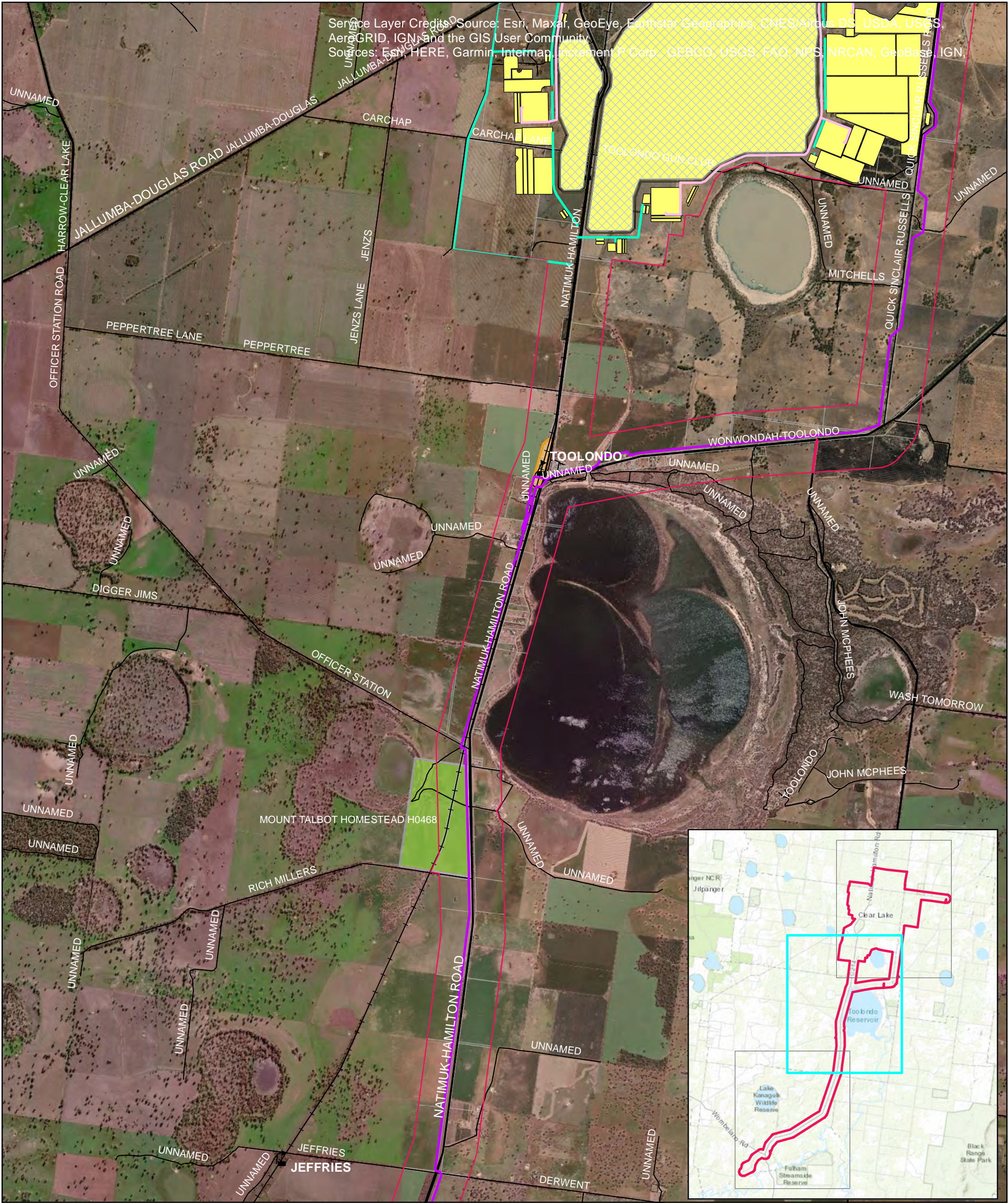
N:\AU\Melbourne\Projects\31\36122\GIS\Maps\Working\HHA\31\_36122\_HHA\_F12\_V1.mxd

180 Lonsdale Street Melbourne VIC 3000 Australia T 61 3 8687 8000 F 61 3 8687 8111 E melmail@ghd.com W www.ghd.com  
© 2021. Whilst every care has been taken to prepare this map, GHD (and DATA CUSTODIAN) make no representations or warranties about its accuracy, reliability, completeness or suitability for any particular purpose and cannot accept liability and responsibility of any kind (whether in contract, tort or otherwise) for any expenses, losses, damages and/or costs (including indirect or consequential damage) which are or may be incurred by any party as a result of the map being inaccurate, incomplete or unsuitable in any way and for any reason.

Created by: asford



Service Layer Credits: Source: Esri, Maxar, GeoEye, Earthstar Geographics, CNES/Airbus DS, USDA, USGS, AeroGRID, IGN, and the GIS User Community  
Sources: Esri, HERE, Garmin, Intermap, increment P Corp., GEBCO, USGS, FAO, NPS, NRCAN, GeoBase, IGN,



- LEGEND**
- Proposed pipeline
  - Process water pipeline
  - Proposed powerline
  - Surveyor blaze
  - Mine pit footprint
  - Mine development footprint
  - Study area
  - Balmoral rail line station 1910s - 1980s
  - VHR Place

Paper Size A3  
0 0.5 1 2  
Kilometers  
Map Projection: Transverse Mercator  
Horizontal Datum: GDA 1994  
Grid: GDA 1994 MGA Zone 54



Iluka Resources Limited  
Wimmera Project

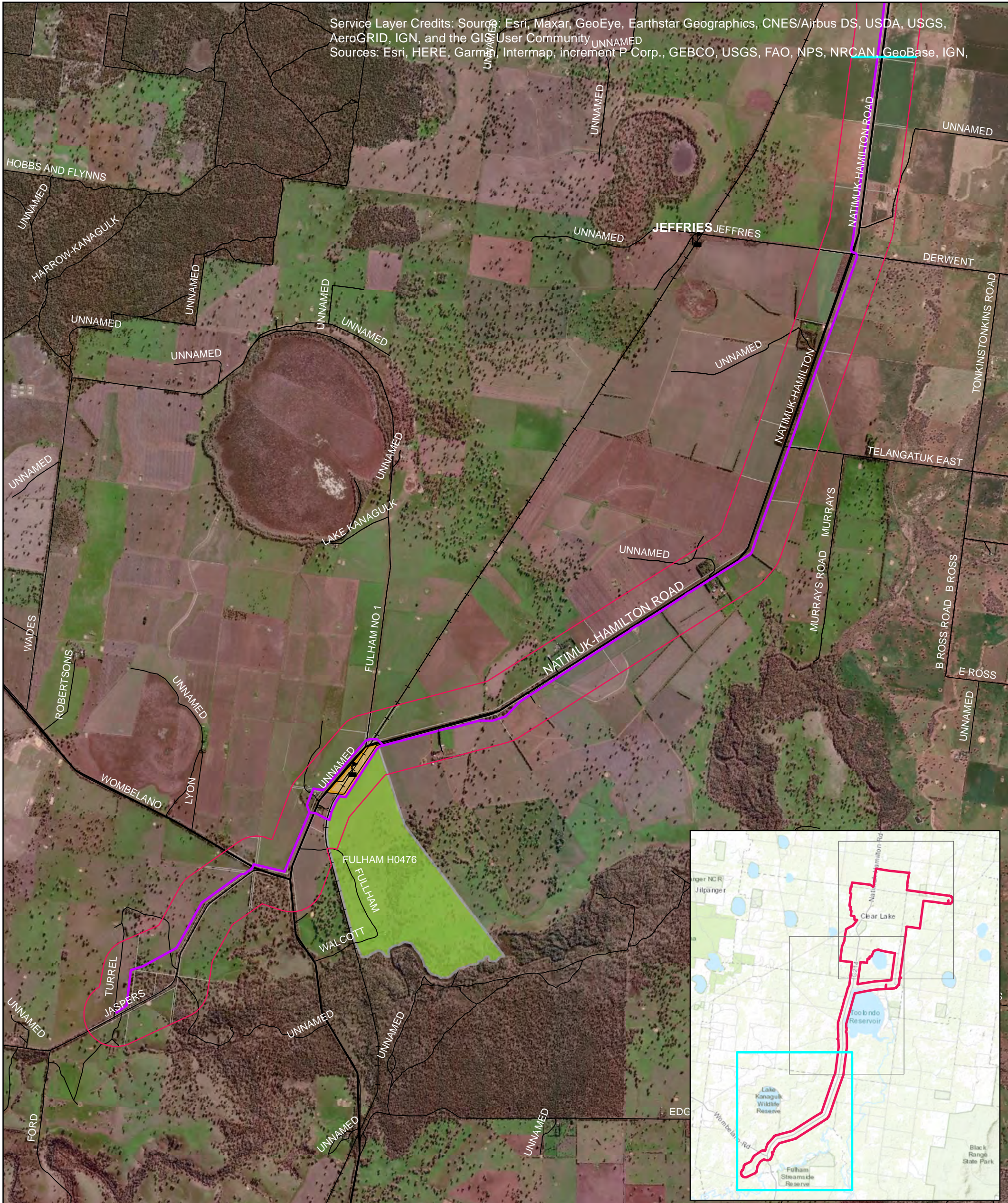
Job Number 31-36122  
Revision B  
Date 21 Jan 2021

Impact assessment

Figure 13



Service Layer Credits: Source: Esri, Maxar, GeoEye, Earthstar Geographics, CNES/Airbus DS, USDA, USGS, AeroGRID, IGN, and the GIS User Community  
Sources: Esri, HERE, Garmin, Intermap, increment P Corp., GEBCO, USGS, FAO, NPS, NRCAN, GeoBase, IGN,



- LEGEND**
- Proposed pipeline
  - Process water pipeline
  - Proposed powerline
  - Surveyor blaze
  - Mine pit footprint
  - Mine development footprint
  - Study area
  - Balmoral rail line station 1910s - 1980s
  - VHR Place

Paper Size A3  
0 0.5 1 2  
Kilometers  
Map Projection: Transverse Mercator  
Horizontal Datum: GDA 1994  
Grid: GDA 1994 MGA Zone 54



Iluka Resources Limited  
Wimmera Project

Job Number 31-36122  
Revision B  
Date 21 Jan 2021

Impact assessment

Figure 14