

# SHEET 7 – LANDSCAPE AND VISUAL

The objective of this information sheet is to:

- summarise the status and the key findings of the landscape and visual investigations to date; and
- invite feedback on the draft environment effects statement (EES) scoping requirements relating to landscape and visual amenity.

## Status of study program

Study	Consultant	Status
Landscape impact assessment	Urbis	Ongoing

A landscape and visual impact assessment is underway to characterise the existing landscape features and scenic values of the region, and to assess the potential visual impacts the Project may have on those values and sensitive receptors. The assessment will also propose measures for the reduction, mitigation and management of potential visual impacts.

## Key findings to date

The mine layout development envelope is flat, open land typically used for agriculture. There are six residences within the mine layout development envelope and a further seven within a 1.5-kilometre buffer.

Existing night-time artificial light levels are not considered to be significant and are largely associated with residential properties, traffic and agricultural plant.

The presence of trees is typically limited to roadsides, Red Gum Swamp, Jallumba Marsh Fauna Reserve and scattered remnant and plantation trees on farming properties.

There are a number of elevated areas in the broader region that may have long views to the mine layout development envelope, including Mount Arapiles-Tooan State Park, Black Range State Park and the Grampians National Park. The open pit, stockpiles, dams and buildings may be visible from some viewpoints in these areas. The refinery stacks will be approximately 30 metres high and the tops of the stacks and emissions from the stacks may be visible from as far as Natimuk. These aspects will be confirmed during the visual impact assessment.

A conceptual site layout is shown as Figure 1.

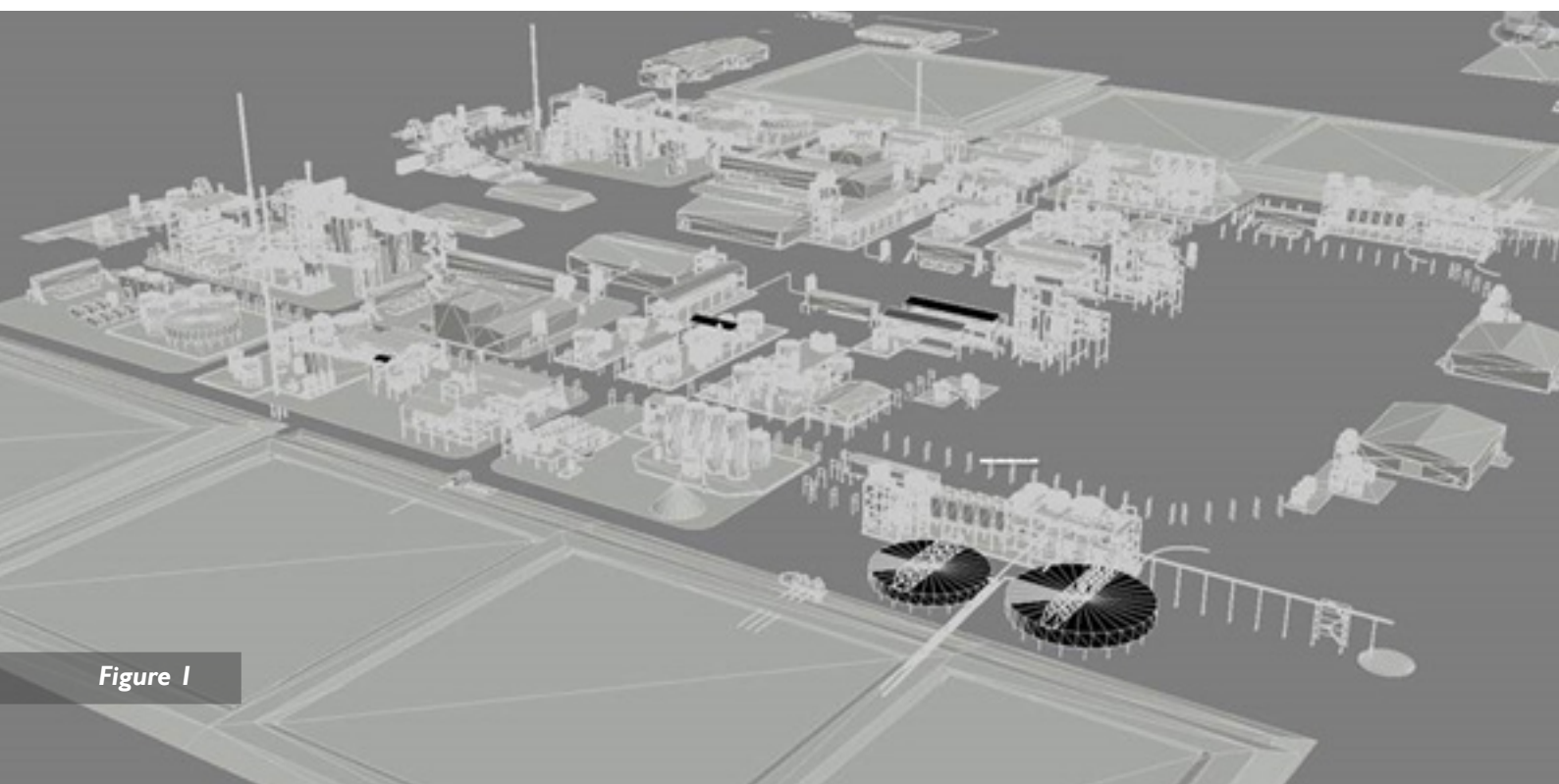
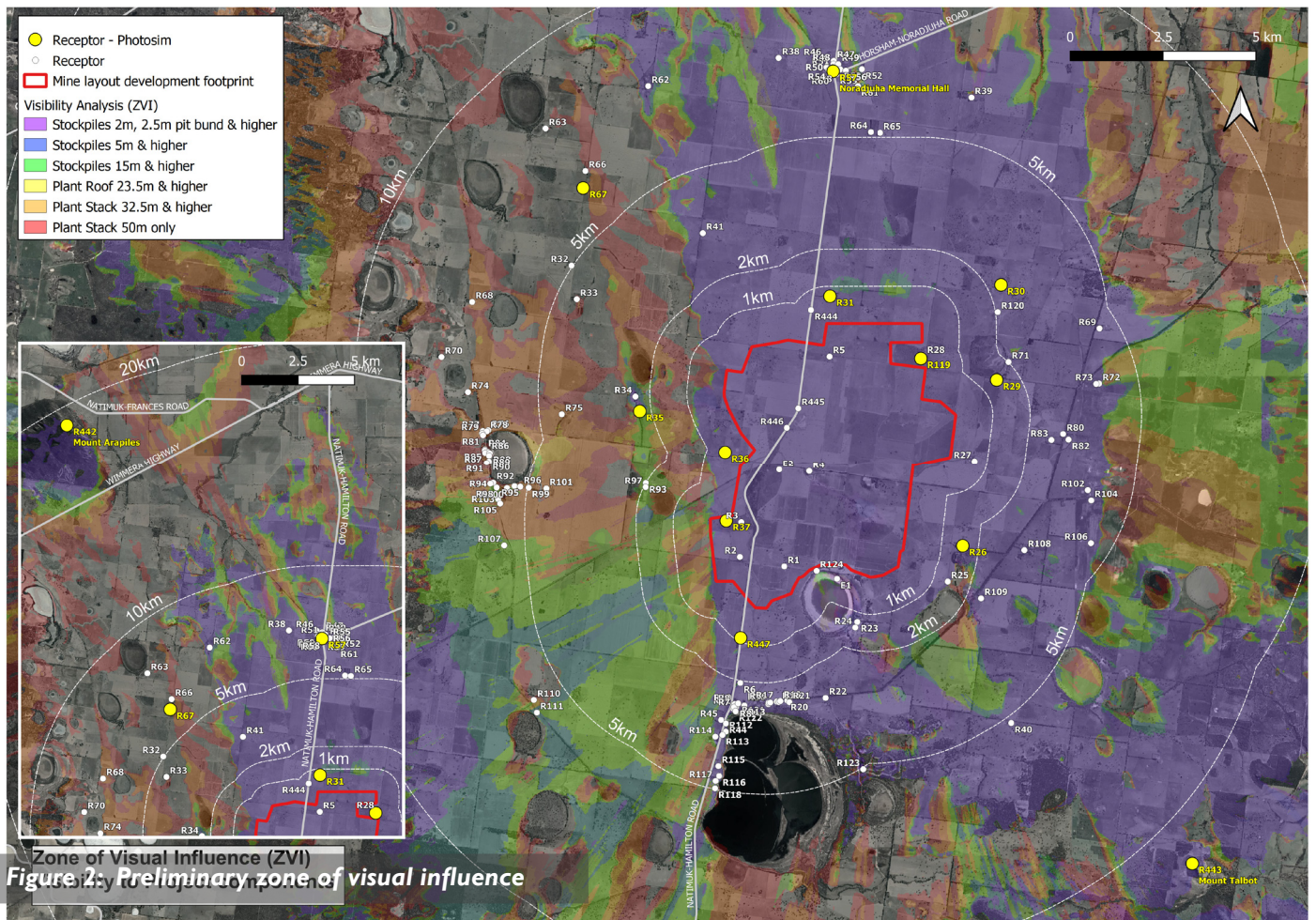


Figure 1



The predicted extent of visibility for the proposed stockpiles, stacks and plant roofs is shown in Figure 2.

## Draft EES scoping requirements

The Victorian Department of Environment, Land, Water and Planning (DELWP) has released the draft EES scoping requirements for the Wimmera Project and is seeking public comment.

These scoping requirements will guide the technical assessments that will be undertaken as part of the preparation of the EES for the Wimmera Project.

The draft EES scoping requirements are available here: [www.planning.vic.gov.au/environment-assessment/browse-projects/projects/wimmera-mineral-sands](http://www.planning.vic.gov.au/environment-assessment/browse-projects/projects/wimmera-mineral-sands)



Public comments are invited on the draft scoping requirements in relation to matters that should be investigated and documented in the environment effects statement (EES) process for the proposed Wimmera Project.

The draft scoping requirements are open for public comment until midnight on 31 March 2020.

Any comments received will be considered by DELWP during the finalisation of the scoping requirements and will be treated as public documents. Your comments also will be considered by the proponent in the preparation of the EES. Personal details and identifying features (eg names, addresses and contact details) will be removed before your submission is shared with Iluka Resources Limited. You must provide written consent for DELWP to provide your name and address to Iluka Resources Limited.

Comments should be emailed to: [environment.assessment@delwp.vic.gov.au](mailto:environment.assessment@delwp.vic.gov.au)

Written comments can also be posted to:

Impact Assessment Unit, Planning  
Department of Environment, Land, Water and Planning  
PO Box 500, EAST MELBOURNE, VIC 8002

To discuss the draft EES scoping requirements with Iluka or for more information please contact Iluka:

Phone: 1800 305 993

Visit: [www.iluka.com/engage/wimmera](http://www.iluka.com/engage/wimmera)

Email: [wimmeraproject@iluka.com](mailto:wimmeraproject@iluka.com)

Drop in: Wimmera community drop-in centre at Horsham Real Estate office  
Tuesdays and Fridays 9.30 am–2.30 pm or by appointment