

Legend

| | | |
|-------------------|-------------------|--------------------|
| 36 dB(A) or below | 52 to 56 dB(A) | Noise Source Plant |
| 37 to 41 dB(A) | 57 to 61 dB(A) | Noise Source Route |
| 42 to 46 dB(A) | 62 to 66 dB(A) | Roads |
| 47 to 51 dB(A) | 67 dB(A) or above | Mine Area |
| | Receptors | |

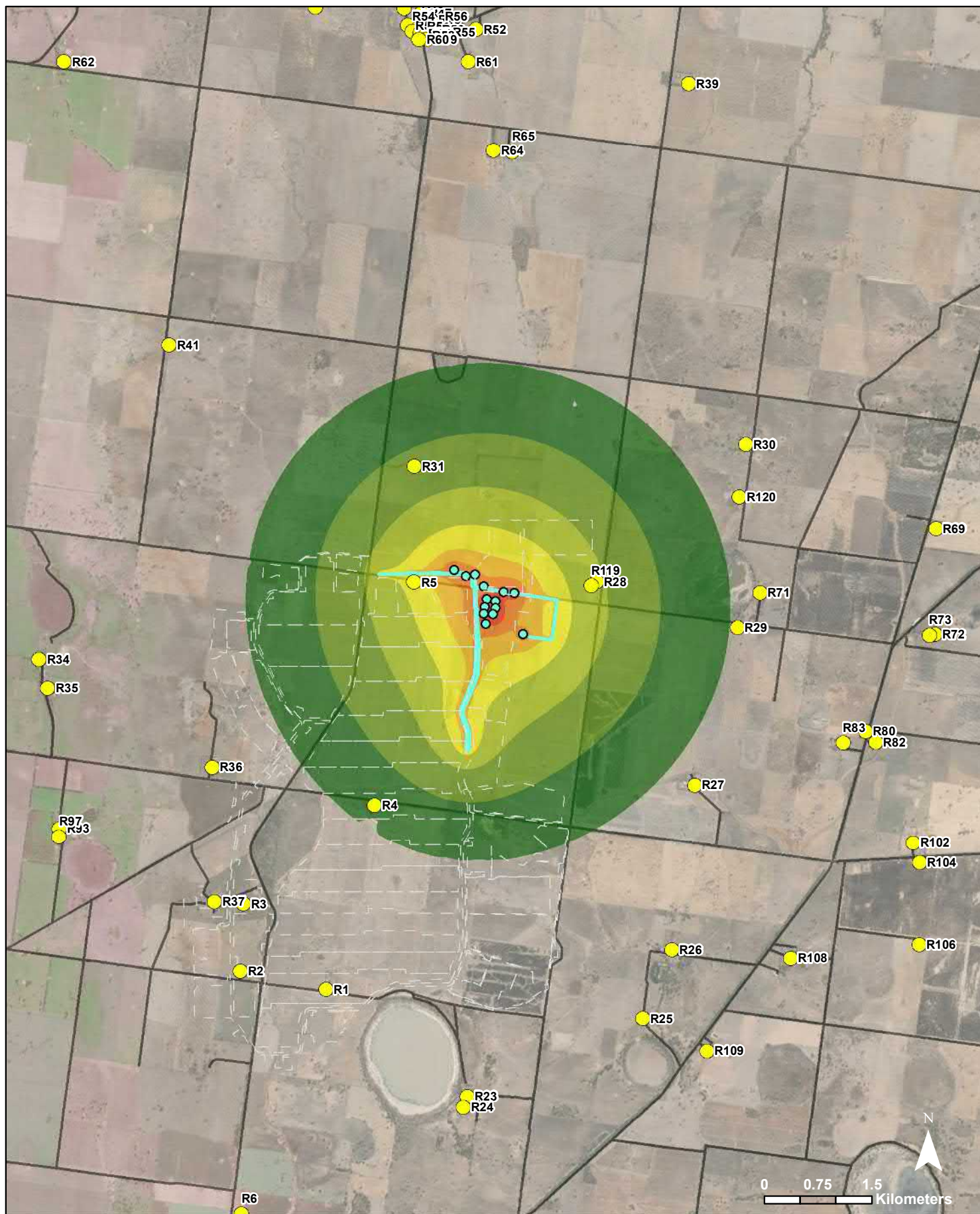
Wimmera Project

AECOM

Civil Works - C1 Mining Construction Noise Levels

PROJECT ID 60619931
CREATED BY JC
LAST MODIFIED 03 February 2020

Figure
2-1



Legend

| | | |
|-------------------|-------------------|--------------------|
| 36 dB(A) or below | 52 to 56 dB(A) | Noise Source Plant |
| 37 to 41 dB(A) | 57 to 61 dB(A) | Noise Source Route |
| 42 to 46 dB(A) | 62 to 66 dB(A) | Roads |
| 47 to 51 dB(A) | 67 dB(A) or above | Mine Area |
| | Receptors | |

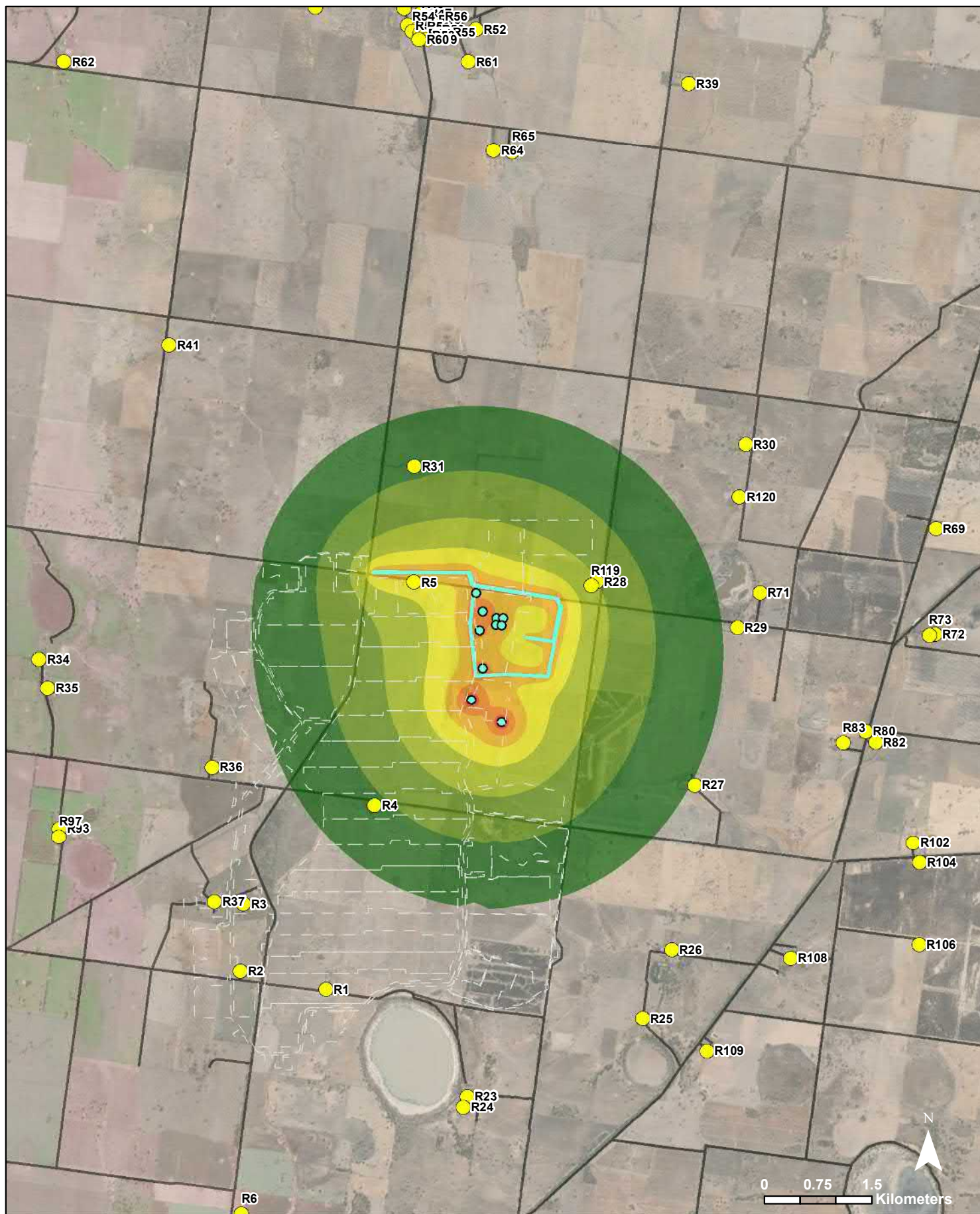
Wimmera Project

AECOM

Concrete Works - C2 Mining Construction Noise Levels

PROJECT ID 60619931
CREATED BY JC
LAST MODIFIED 03 February 2020

Figure
2-2



Legend

| | | |
|-------------------|-------------------|--------------------|
| 36 dB(A) or below | 52 to 56 dB(A) | Noise Source Plant |
| 37 to 41 dB(A) | 57 to 61 dB(A) | Noise Source Route |
| 42 to 46 dB(A) | 62 to 66 dB(A) | Roads |
| 47 to 51 dB(A) | 67 dB(A) or above | Mine Area |
| Receptors | | |

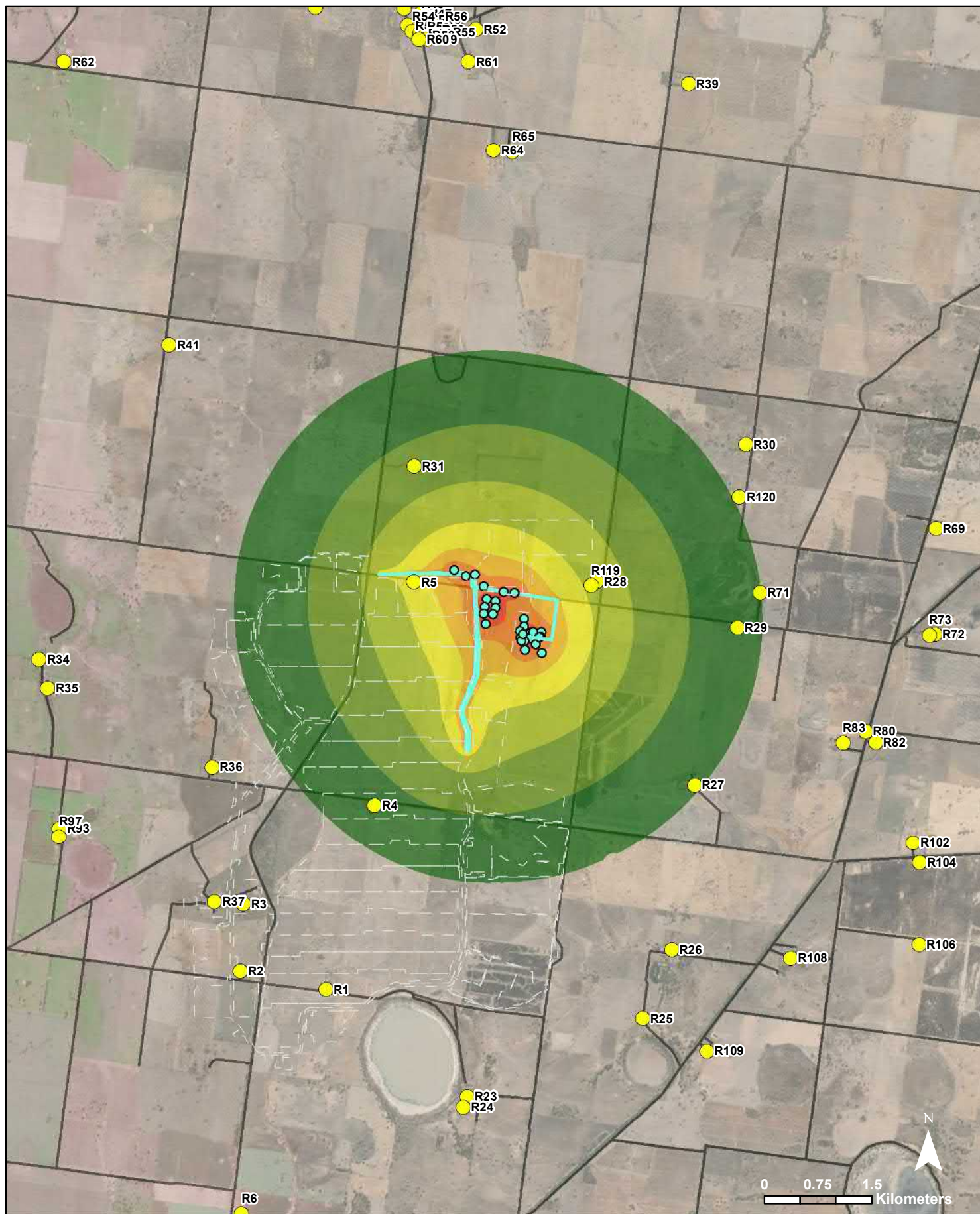
Wimmera Project

AECOM

Mine Access Road Works - C3 Mining Construction Noise Levels

PROJECT ID 60619931
CREATED BY JC
LAST MODIFIED 03 February 2020

**Figure
2-3**



Legend

| | | |
|-------------------|-------------------|--------------------|
| 36 dB(A) or below | 52 to 56 dB(A) | Noise Source Plant |
| 37 to 41 dB(A) | 57 to 61 dB(A) | Noise Source Route |
| 42 to 46 dB(A) | 62 to 66 dB(A) | Roads |
| 47 to 51 dB(A) | 67 dB(A) or above | Mine Area |
| | Receptors | |

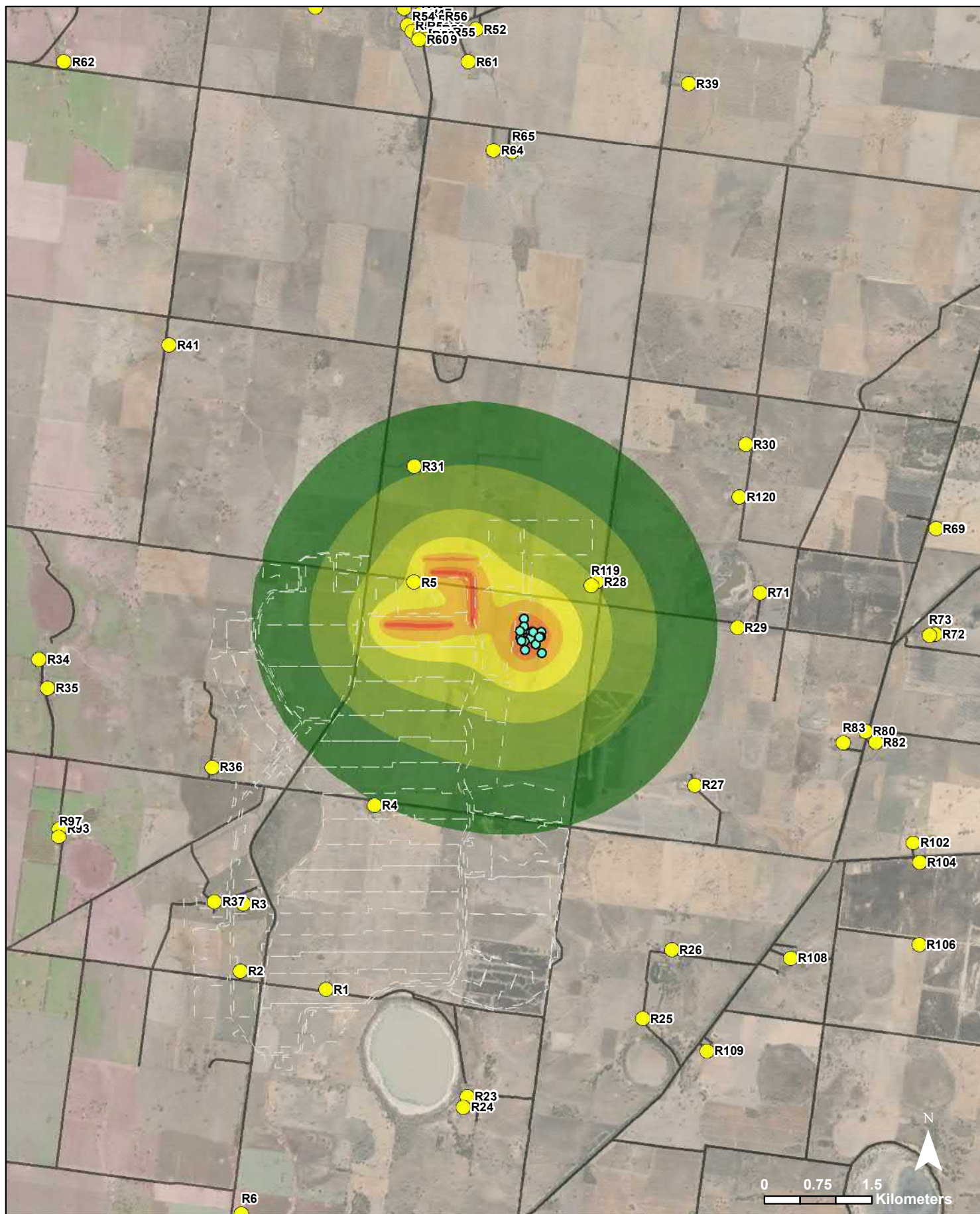
Wimmera Project

AECOM

EP TSF Construction - C2/C4/C5 Mining Construction Noise Levels

PROJECT ID 60619931
CREATED BY JC
LAST MODIFIED 03 February 2020

Figure
2-4



Legend

| | | |
|-------------------|-------------------|--------------------|
| 36 dB(A) or below | 52 to 56 dB(A) | Noise Source Plant |
| 37 to 41 dB(A) | 57 to 61 dB(A) | Roads |
| 42 to 46 dB(A) | 62 to 66 dB(A) | Mine Area |
| 47 to 51 dB(A) | 67 dB(A) or above | |
| Receptors | | |

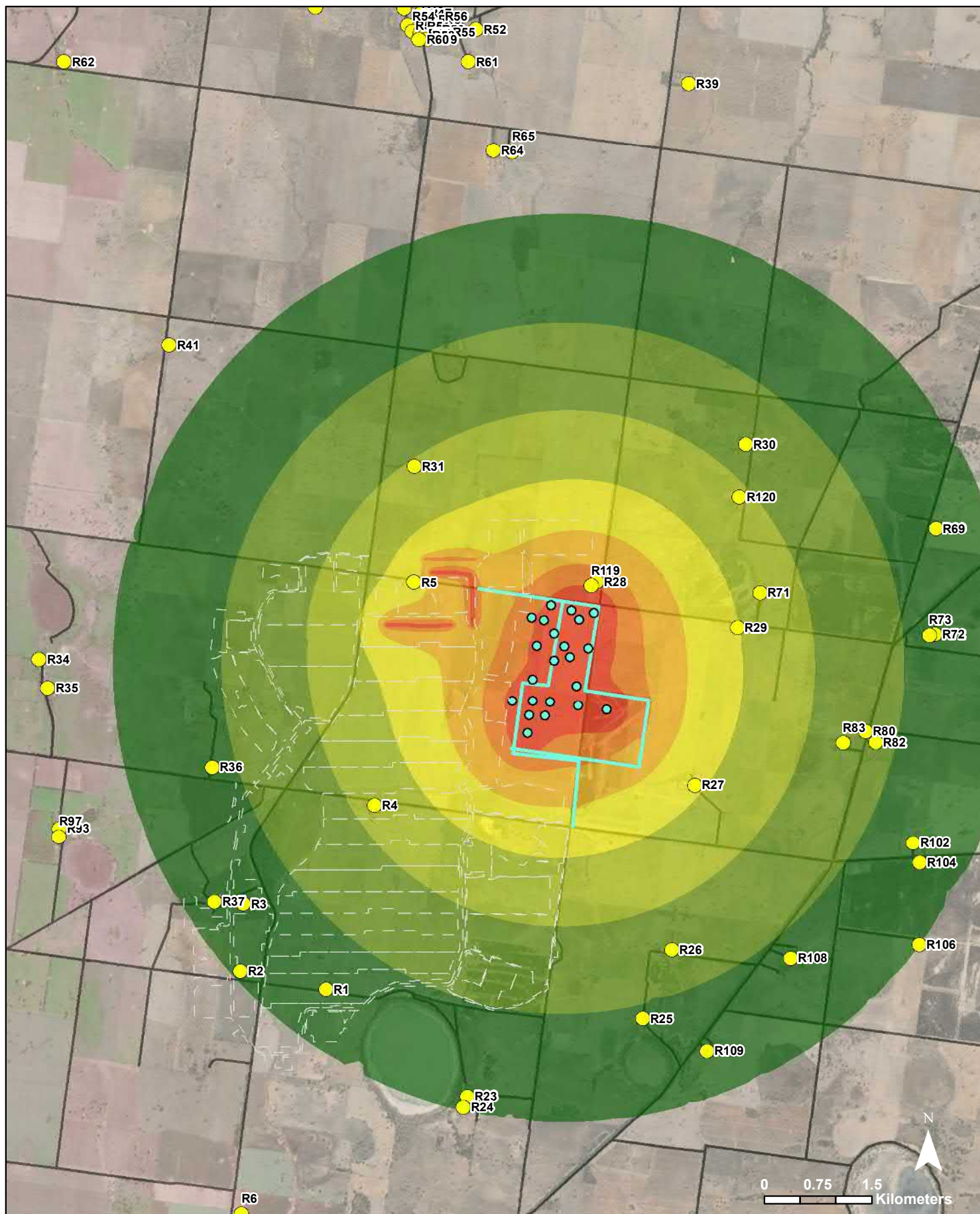
Wimmera Project

AECOM

Floc Plant SMP Install - C4/C5 Mining Construction Noise Levels

PROJECT ID 60619931
CREATED BY JC
LAST MODIFIED 03 February 2020

**Figure
2-5**



Legend

| | | |
|-------------------|-------------------|--------------------|
| 36 dB(A) or below | 52 to 56 dB(A) | Noise Source Plant |
| 37 to 41 dB(A) | 57 to 61 dB(A) | Noise Source Route |
| 42 to 46 dB(A) | 62 to 66 dB(A) | Roads |
| 47 to 51 dB(A) | 67 dB(A) or above | Mine Area |
| | Receptors | |

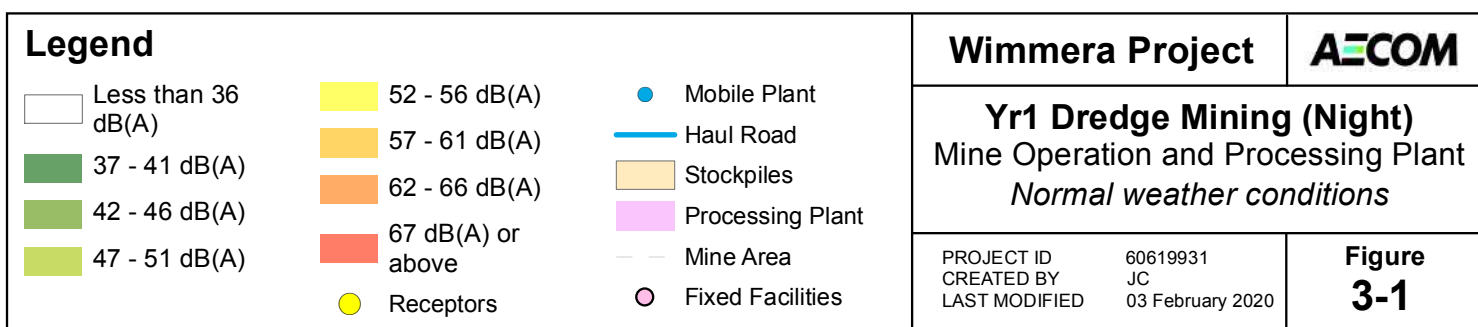
Wimmera Project

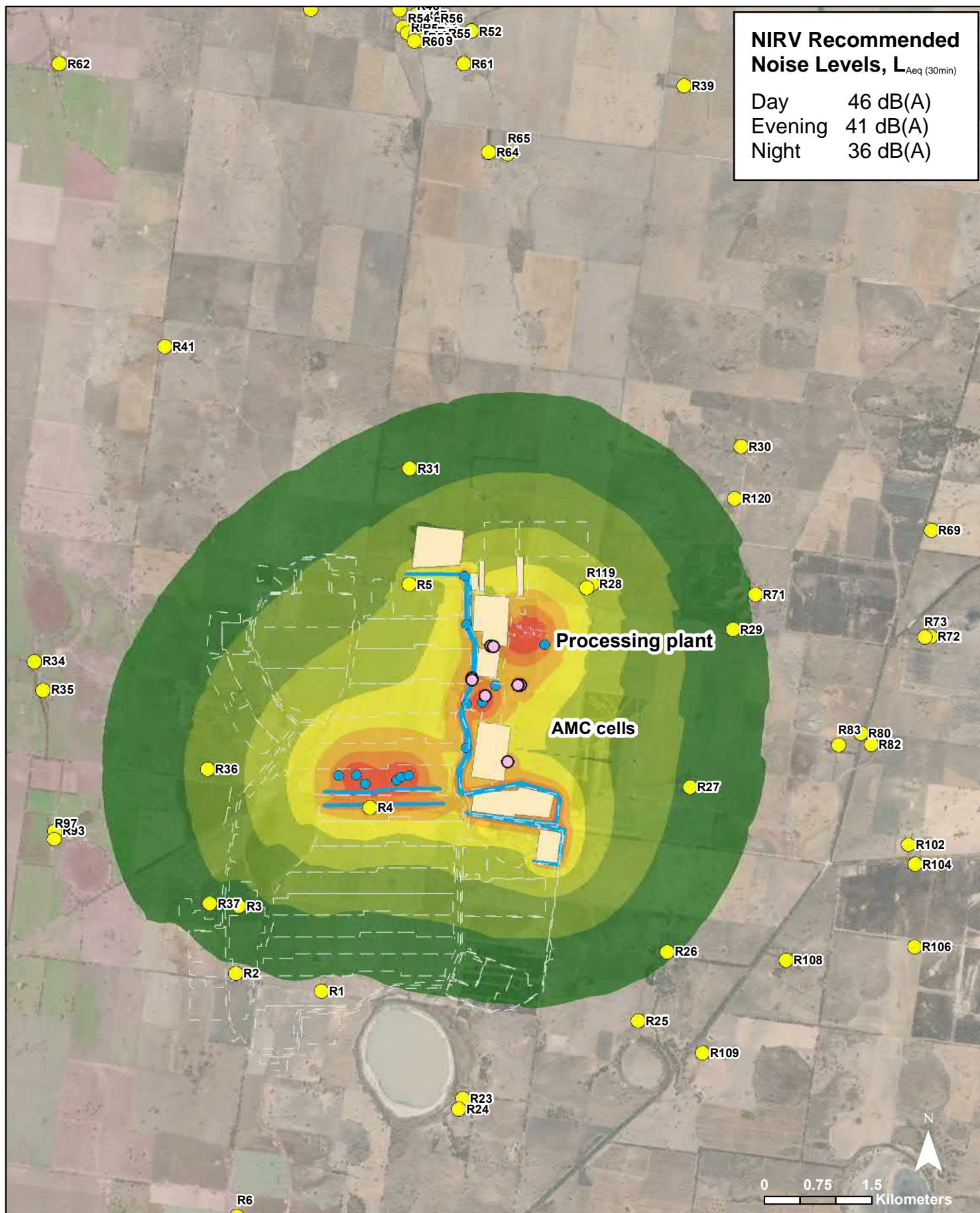
AECOM

Plant Construction - C6 Mining Construction Noise Levels

PROJECT ID 60619931
CREATED BY JC
LAST MODIFIED 03 February 2020

Figure
2-6





Legend

| | | |
|--------------------|-------------------|------------------|
| Less than 36 dB(A) | 52 - 56 dB(A) | Mobile Plant |
| 37 - 41 dB(A) | 57 - 61 dB(A) | Haul Road |
| 42 - 46 dB(A) | 62 - 66 dB(A) | Stockpiles |
| 47 - 51 dB(A) | 67 dB(A) or above | Processing Plant |
| | | Mine Area |
| | | Fixed Facilities |
| | | Receptors |

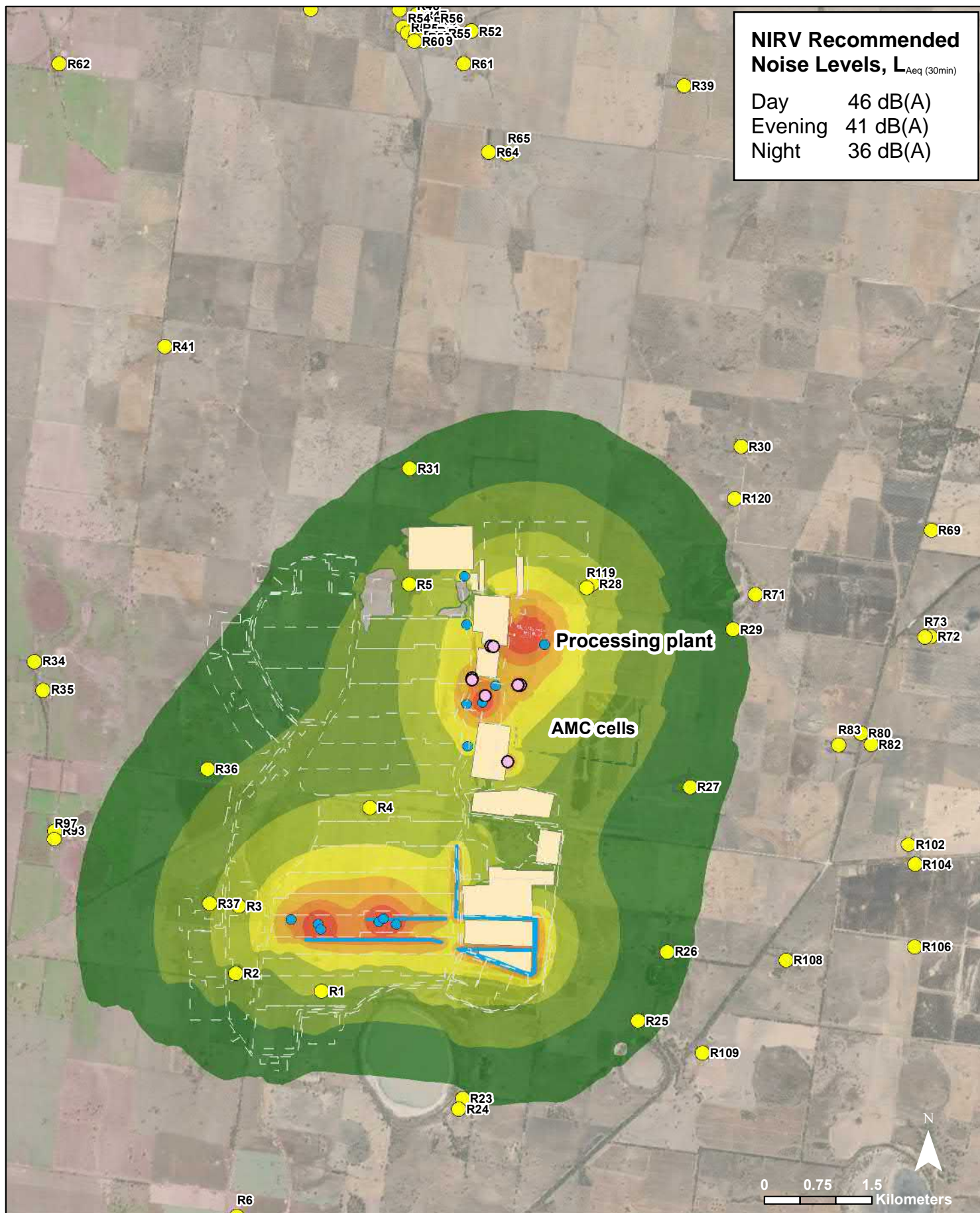
Wimmera Project

AECOM

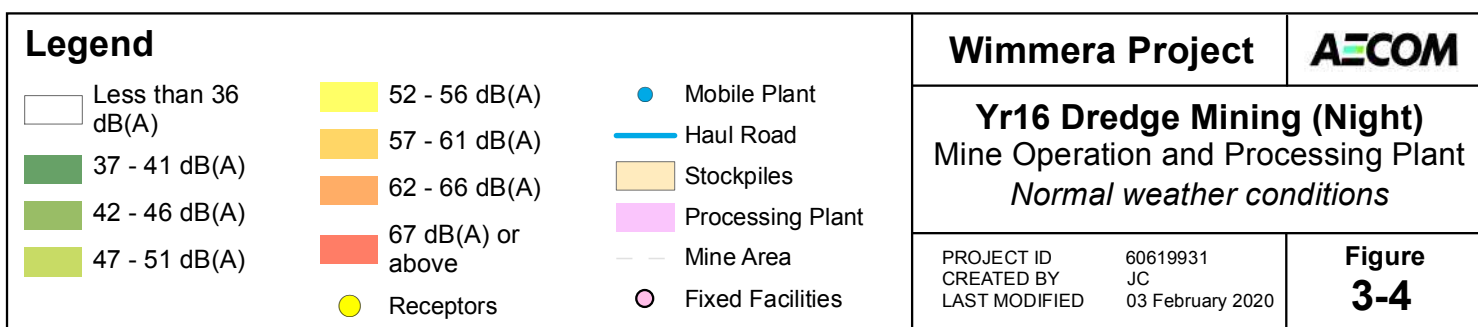
Yr7 Dredge Mining (Night) Mine Operation and Processing Plant Normal weather conditions

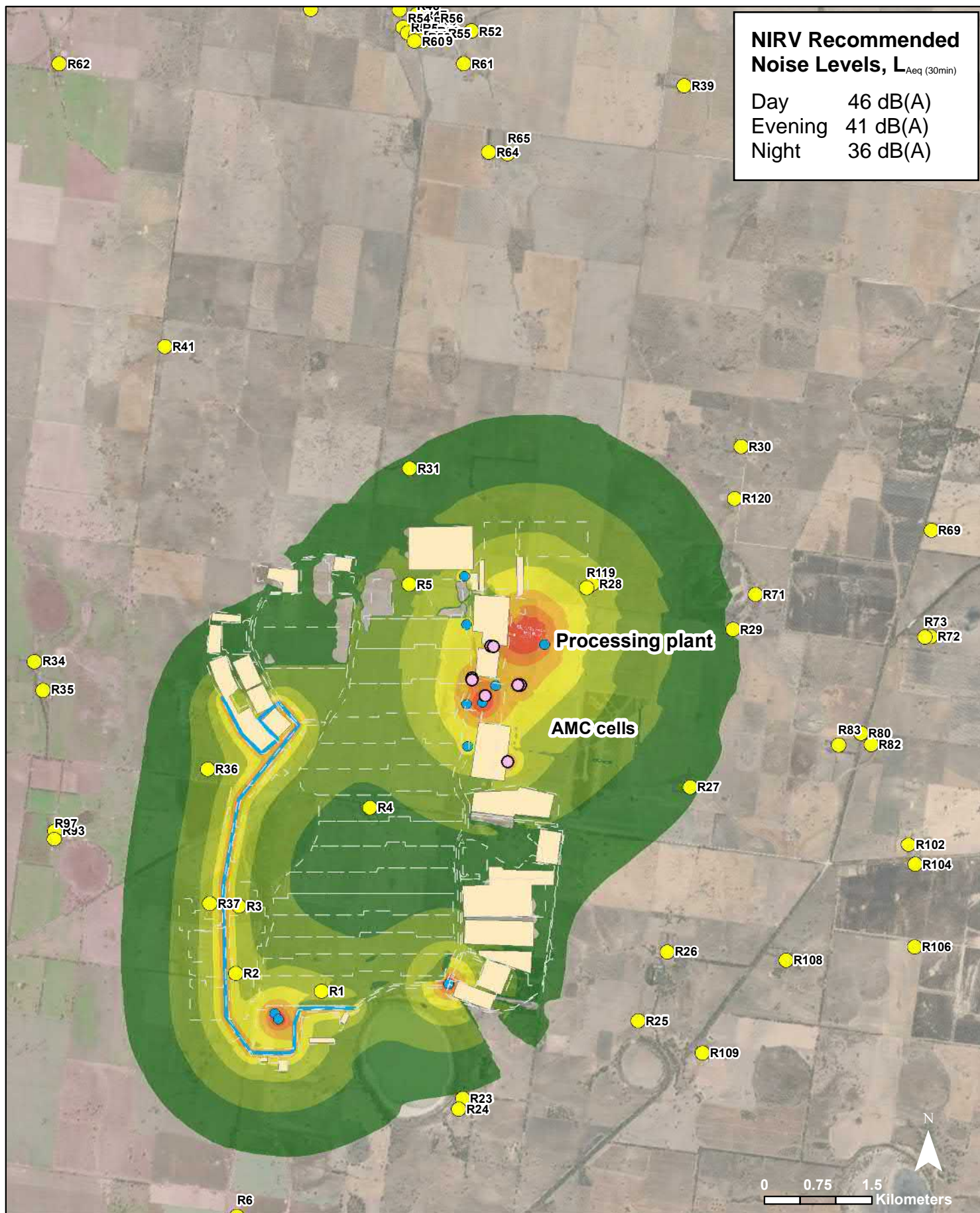
PROJECT ID 60619931
CREATED BY JC
LAST MODIFIED 03 February 2020

**Figure
3-2**



| | | | | |
|---|--|---|--------------------------|--------------|
| Legend | | Wimmera Project | | AECOM |
| <p>Less than 36 dB(A)</p> <p>37 - 41 dB(A)</p> <p>42 - 46 dB(A)</p> <p>47 - 51 dB(A)</p> <p>52 - 56 dB(A)</p> <p>57 - 61 dB(A)</p> <p>62 - 66 dB(A)</p> <p>67 dB(A) or above</p> <p>Receptors</p> | | <p>Yr13 Dredge Mining (Night)</p> <p>Mine Operation and Processing Plant</p> <p><i>Normal weather conditions</i></p> | | |
| <p>Mobile Plant</p> <p>Haul Road</p> <p>Stockpiles</p> <p>Processing Plant</p> <p>Mine Area</p> <p>Fixed Facilities</p> | | <p>PROJECT ID 60619931</p> <p>CREATED BY JC</p> <p>LAST MODIFIED 03 February 2020</p> | <p>Figure 3-3</p> | |





Legend

| | |
|--|--------------------|
| | Less than 36 dB(A) |
| | 37 - 41 dB(A) |
| | 42 - 46 dB(A) |
| | 47 - 51 dB(A) |

| | |
|--|-------------------|
| | 52 - 56 dB(A) |
| | 57 - 61 dB(A) |
| | 62 - 66 dB(A) |
| | 67 dB(A) or above |
| | Receptors |

| | |
|--|------------------|
| | Mobile Plant |
| | Haul Road |
| | Stockpiles |
| | Processing Plant |
| | Mine Area |
| | Fixed Facilities |

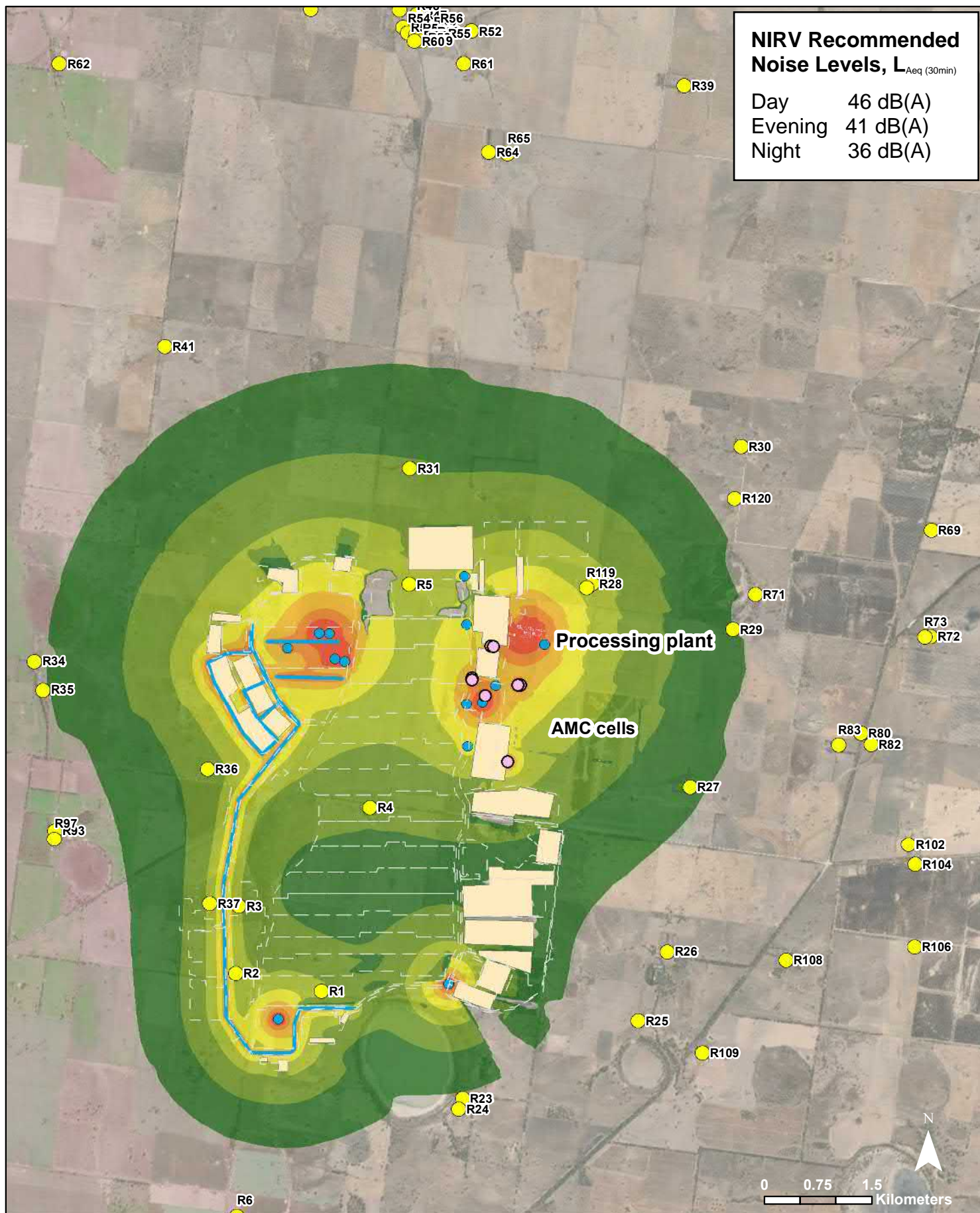
Wimmera Project

AECOM

Yr17A Dredge Mining (Night)
 Mine Operation and Processing Plant
Normal weather conditions

PROJECT ID 60619931
 CREATED BY JC
 LAST MODIFIED 03 February 2020

Figure 3-5



Legend

| | | |
|--------------------|-------------------|------------------|
| Less than 36 dB(A) | 52 - 56 dB(A) | Mobile Plant |
| 37 - 41 dB(A) | 57 - 61 dB(A) | Haul Road |
| 42 - 46 dB(A) | 62 - 66 dB(A) | Stockpiles |
| 47 - 51 dB(A) | 67 dB(A) or above | Processing Plant |
| | | Mine Area |
| | | Fixed Facilities |
| | | Receptors |

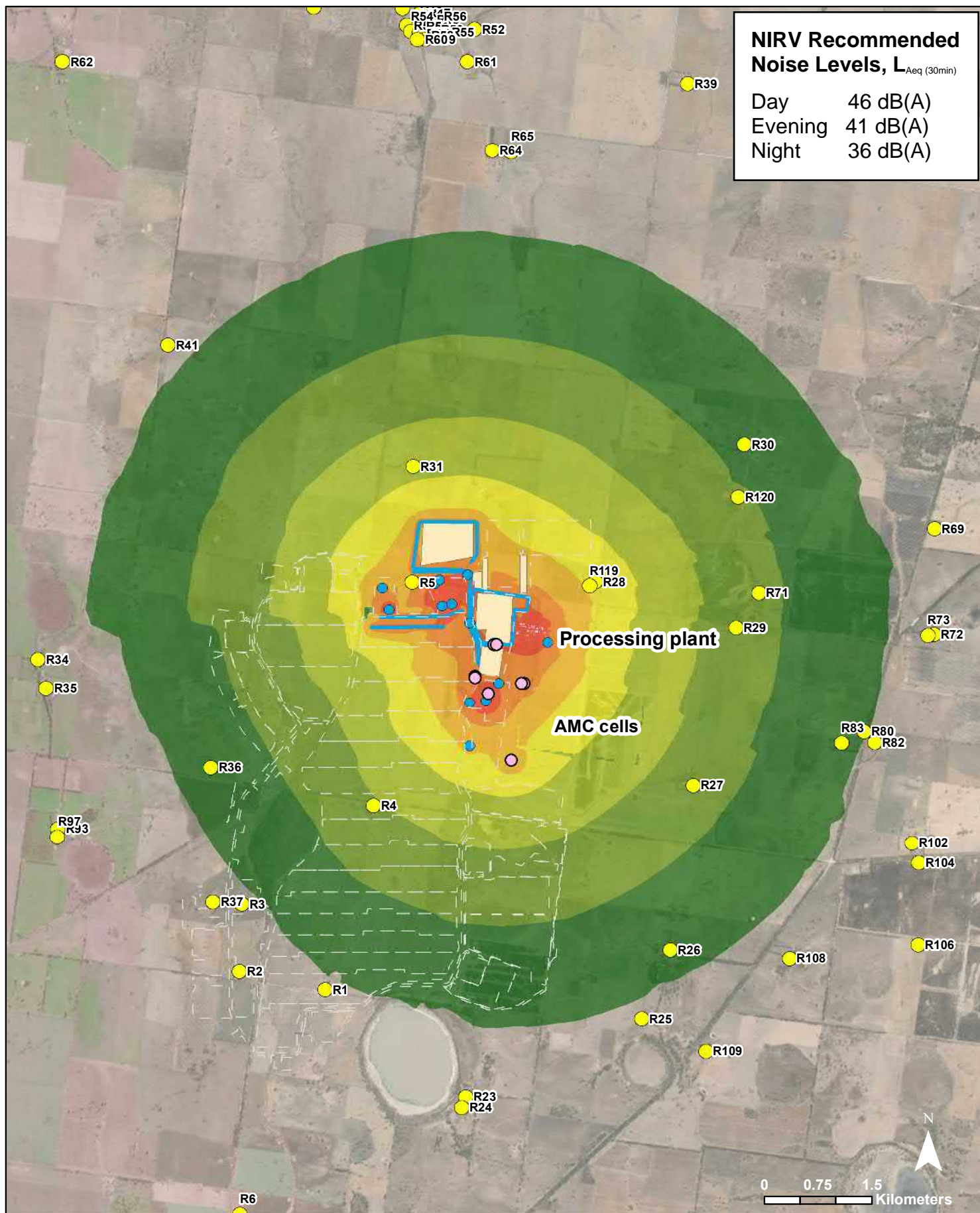
Wimmera Project

AECOM

Yr17B Dredge Mining (Night) Mine Operation and Processing Plant Normal weather conditions

PROJECT ID 60619931
CREATED BY JC
LAST MODIFIED 03 February 2020

**Figure
3-6**



Legend

Less than 36 dB(A)

37 - 41 dB(A)

42 - 46 dB(A)

47 - 51 dB(A)

52 - 56 dB(A)

57 - 61 dB(A)

62 - 66 dB(A)

67 dB(A) or above

Receptors

Mobile Plant

Haul Road

Stockpiles

Processing Plant

Mine Area

Fixed Facilities

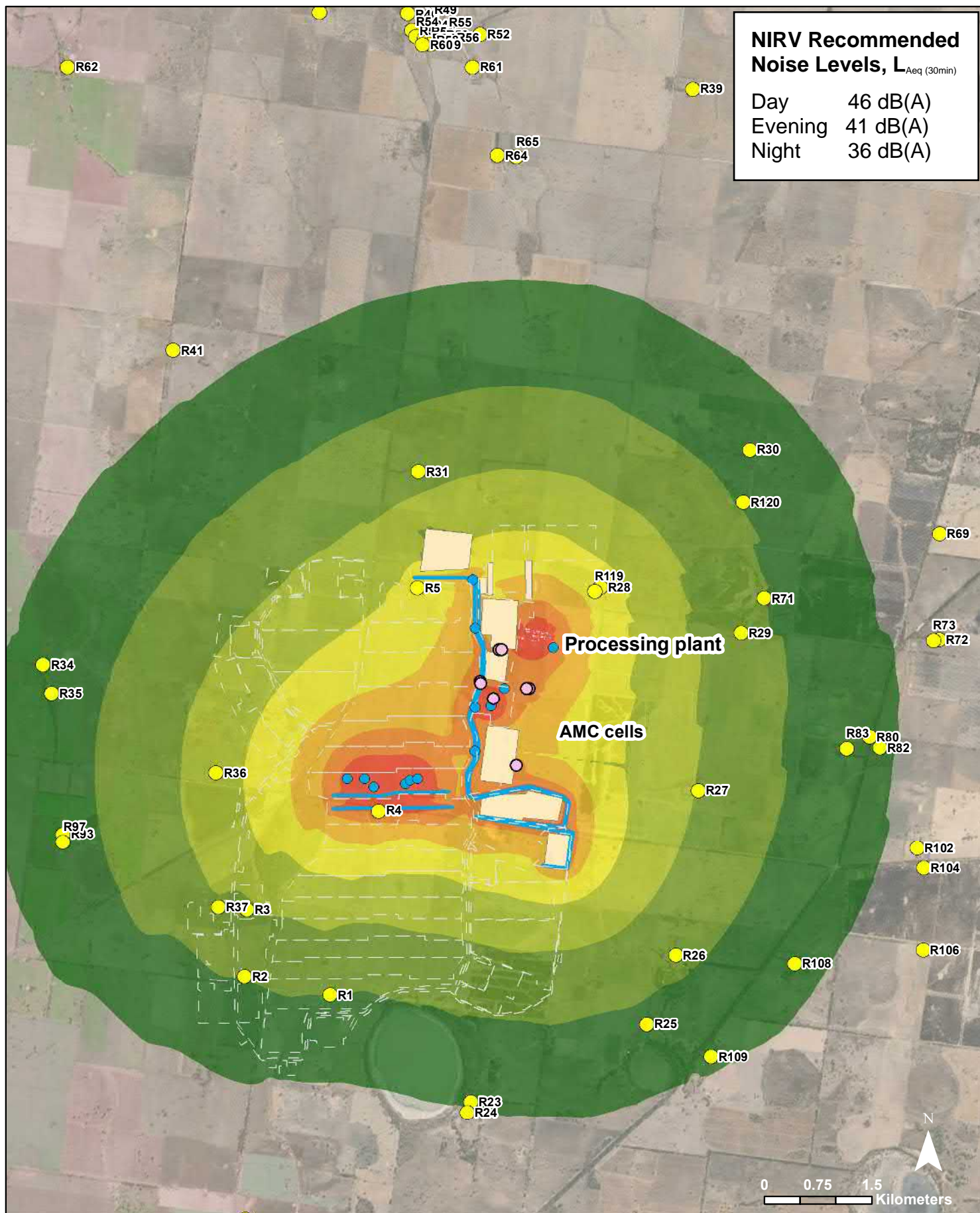
Wimmera Project

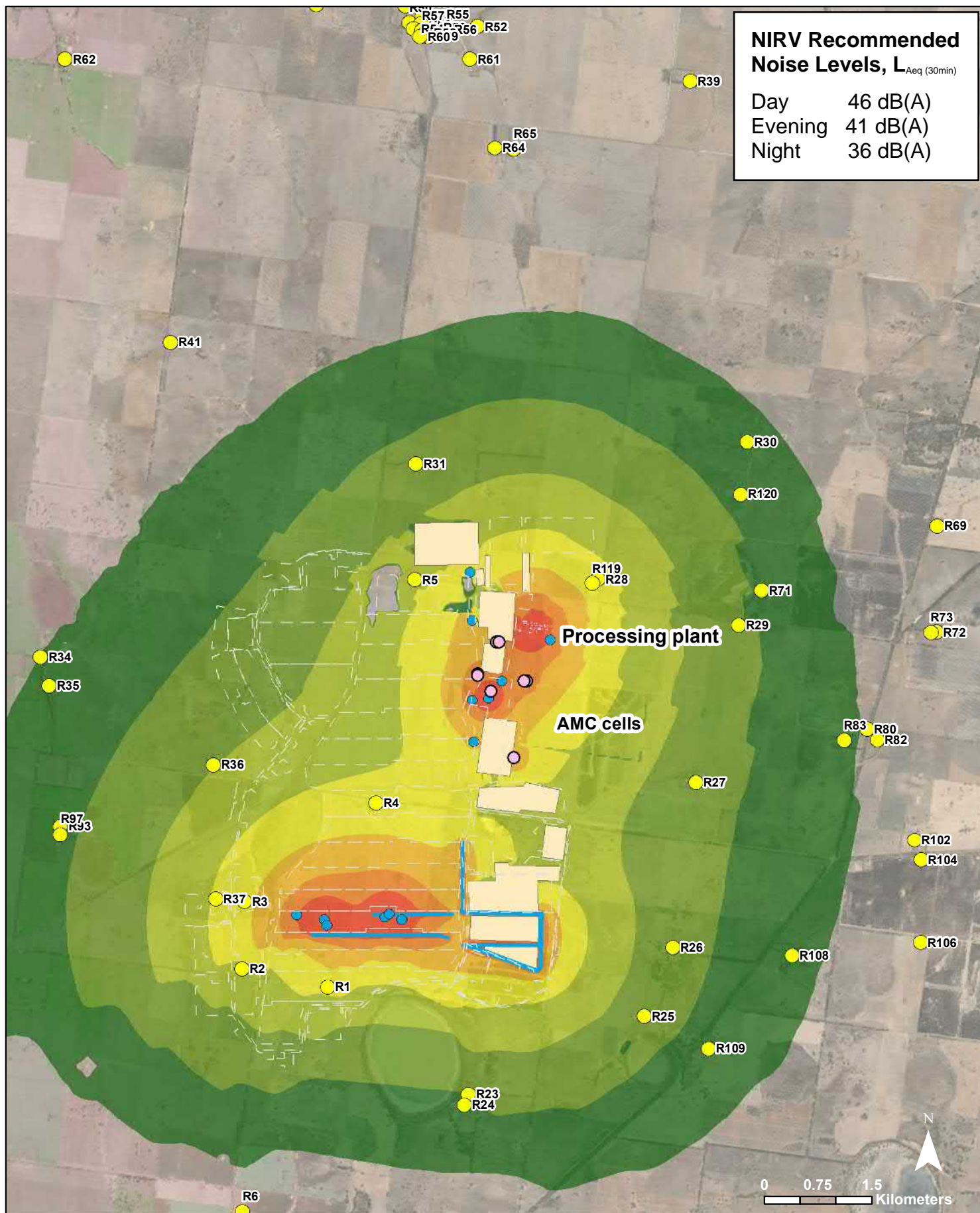
AECOM

Yr1 Dredge Mining (Night)
Mine Operation and Processing Plant
Adverse weather conditions

PROJECT ID 60619931
CREATED BY JC
LAST MODIFIED 03 February 2020

Figure 3-8





Legend

| |
|--------------------|
| Less than 36 dB(A) |
| 37 - 41 dB(A) |
| 42 - 46 dB(A) |
| 47 - 51 dB(A) |

| |
|-------------------|
| 52 - 56 dB(A) |
| 57 - 61 dB(A) |
| 62 - 66 dB(A) |
| 67 dB(A) or above |
| Receptors |

| |
|------------------|
| Mobile Plant |
| Haul Road |
| Stockpiles |
| Processing Plant |
| Mine Area |
| Fixed Facilities |

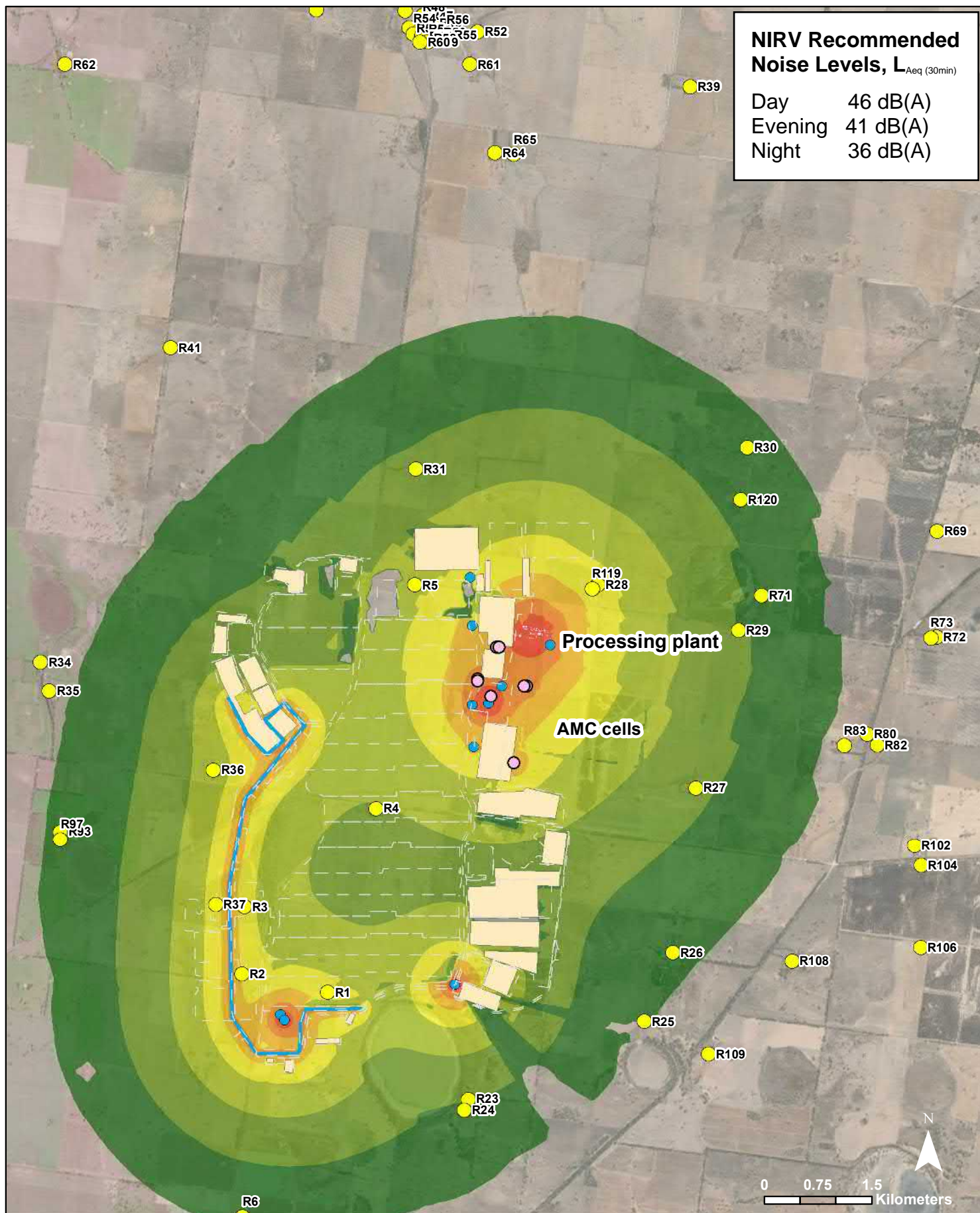
Wimmera Project

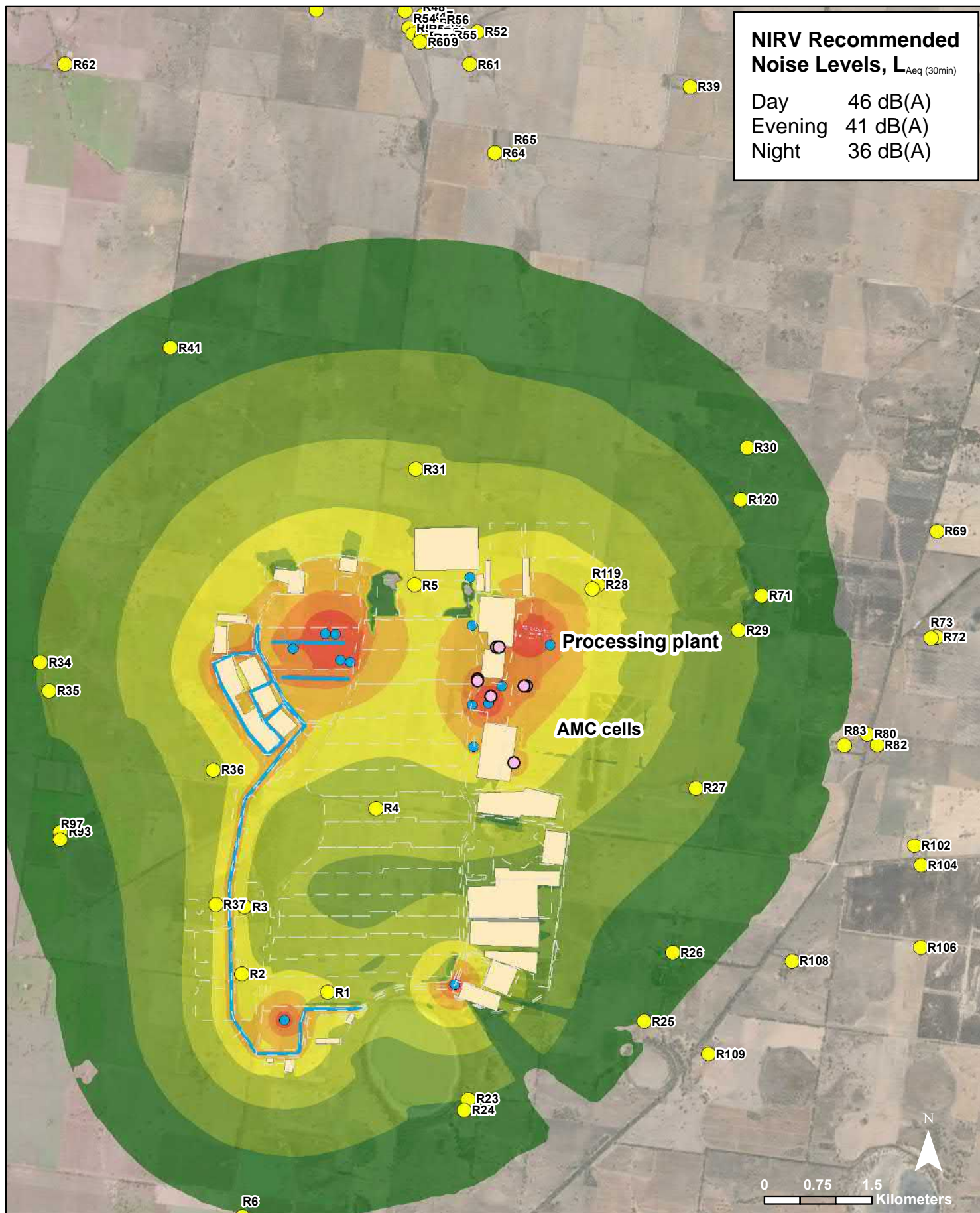
AECOM

Yr13 Dredge Mining (Night) Mine Operation and Processing Plant *Adverse weather conditions*

PROJECT ID 60619931
CREATED BY JC
LAST MODIFIED 03 February 2020

Figure 3-10





Legend

| |
|--------------------|
| Less than 36 dB(A) |
| 37 - 41 dB(A) |
| 42 - 46 dB(A) |
| 47 - 51 dB(A) |

| |
|-------------------|
| 52 - 56 dB(A) |
| 57 - 61 dB(A) |
| 62 - 66 dB(A) |
| 67 dB(A) or above |
| Receptors |

| |
|------------------|
| Mobile Plant |
| Haul Road |
| Stockpiles |
| Processing Plant |
| Mine Area |
| Fixed Facilities |

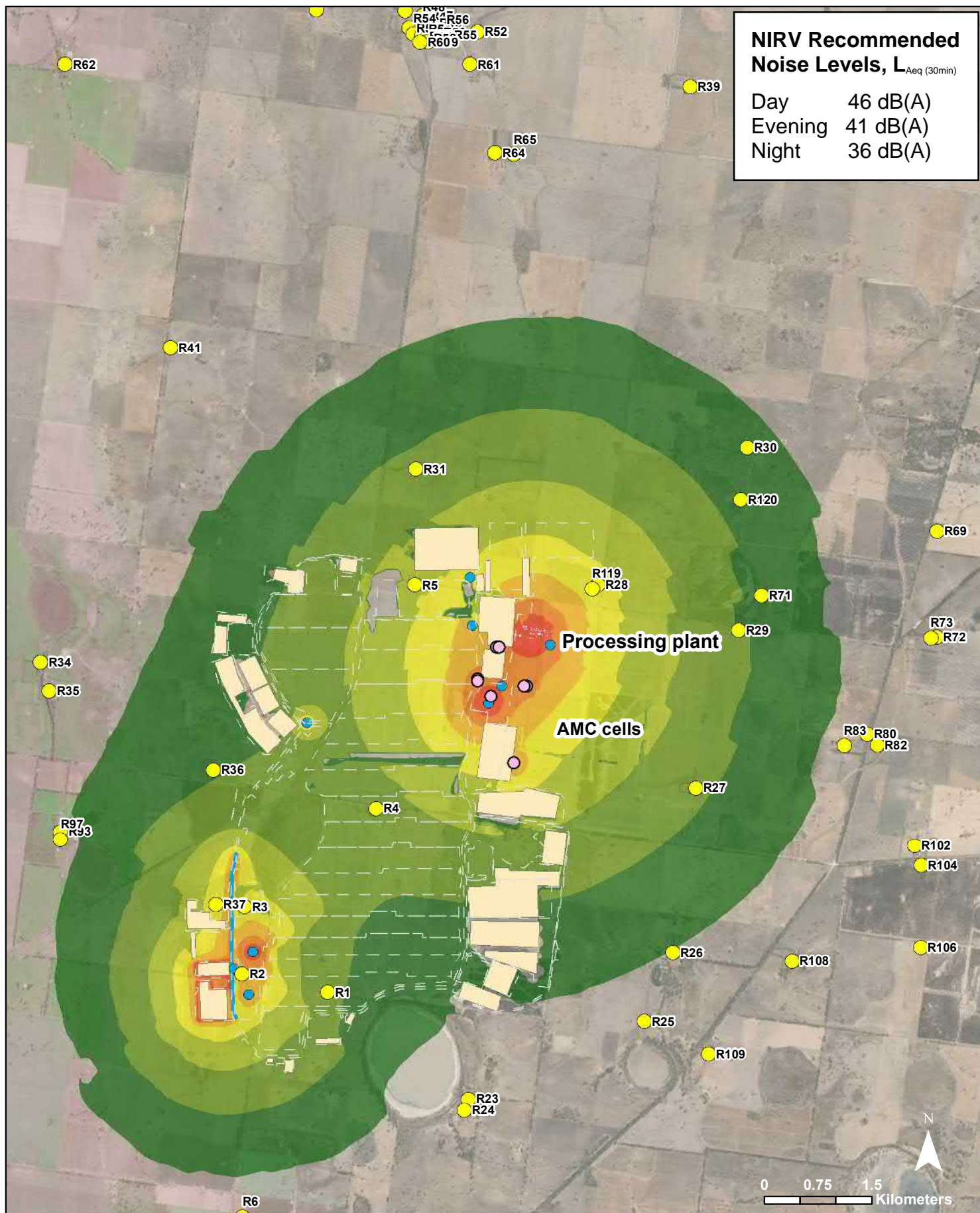
Wimmera Project

AECOM

Yr17B Dredge Mining (Night) Mine Operation and Processing Plant *Adverse weather conditions*

PROJECT ID 60619931
CREATED BY JC
LAST MODIFIED 03 February 2020

**Figure
3-13**



Legend

Less than 36 dB(A)

37 - 41 dB(A)

42 - 46 dB(A)

47 - 51 dB(A)

52 - 56 dB(A)

57 - 61 dB(A)

62 - 66 dB(A)

67 dB(A) or above

Receptors

Mobile Plant

Haul Road

Stockpiles

Processing Plant

Mine Area

Fixed Facilities

Wimmera Project

AECOM

Yr19 Dredge Mining (Night)
Mine Operation and Processing Plant
Adverse weather conditions

PROJECT ID 60619931
CREATED BY JC
LAST MODIFIED 03 February 2020

Figure 3-14