

Map shows the proposed Tutunup Mineral Sands Project development envelope, which is the entire area subject to environmental and engineering studies. The actual mine footprint will be a smaller area contained within the development envelope.

Proposal description

Planning continues on Iluka Resources' proposal to develop a mineral sands mine in Tutunup, about 195km south of Perth and 17km east of Busselton in the south west of Western Australia.

The Tutunup Mineral Sands Project (the Proposal) includes the development of a mining operation and associated infrastructure including mine pit(s), a concentrator to process mineral sands, dams for water and clay fines management, material stockpiles, workshops, administration buildings and haul roads. The Proposal also includes rehabilitation works, monitoring and maintenance activities.

Material concentrated (known as heavy mineral concentrate, or HMC) at the site will be transported by truck to Iluka's existing facility in North Capel operations for further processing.

The Proposal development envelope is 653ha, with the final size of the project to be determined when planning is complete.

At what stage is the proposal?

The Proposal is in the pre-feasibility study phase, which involves assessing various development options before making a recommendation for approval by the Iluka Board of Directors.

Iluka aims to refer the Proposal for environmental impact assessment by State and Commonwealth government agencies in Q4 2021.

If approved, what would be mined at Tutunup?

Iluka is targeting a sand deposit that contains HMC, the majority of which is naturally occurring ilmenite, which is a titanium dioxide mineral. This ilmenite can be processed at Iluka's nearby synthetic rutile kilns in North Capel to produce a valuable titanium feedstock which is used for pigment production.

Environmental assessment and approvals

The Proposal requires State and Commonwealth government approvals to proceed. The first step is to refer the Proposal for assessment under Part IV of the *Environmental Protection Act 1986* (WA) and under the *Biodiversity and Conservation Act 1999* (Cth) in late 2021.

The Western Australian Environmental Protection Authority (EPA) will determine a level of assessment based on the Proposal's complexity and potential impacts. The Commonwealth Department of Agriculture, Water and the Environment (DAWE) will determine whether assessment of potential impact on Matters of National Environmental Significance is required.

Information on government approvals can be found at:

www.epa.wa.gov.au/pages/step-step-through-proposal-assessment-process

www.environment.gov.au/epbc/environment-assessment-and-approvals

In addition, approvals will be required under the Mining Act 1978, Part V of the *Environmental Protection Act 1986* and the *Rights in Water and Irrigation Act 1914*, and may also be required under the *Aboriginal Heritage Act 1972*. Part of undertaking the baseline studies and better defining the project will be to determine potential impacts and additional assessments that are required.

Managing impacts

As part of the government approvals process, Iluka is required to conduct a range of studies addressing potential impacts. These must show a detailed understanding of baseline, or pre-mining conditions and explain how potential impacts will be avoided or managed. The range of studies include:

- detailed flora and vegetation assessment;
- fauna and habitat assessment, targeted threatened species assessment and short-range endemic fauna assessment;
- aquatic biology assessment;
- phytophthora dieback survey;
- groundwater and surface water modelling;
- noise assessment;
- heritage assessment;
- air and dust assessment;
- transport assessment;
- human health assessment;
- acid sulfate soils assessment;
- soil and landform assessment; and
- pasture productivity assessment.



Aboriginal cultural heritage studies

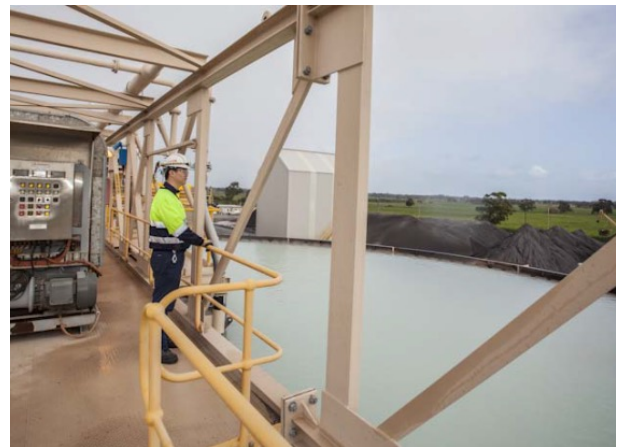
Iluka is engaging with Traditional Owners, Wadandi Noongar people, to develop a process that appropriately manages heritage values. In 2009 a heritage survey was conducted by the South West Bojarah Native Title Claimant Group, the South West Aboriginal Land and Sea Council and Iluka. However, given the length of time that has passed, commencement of the South West Native Title Settlement and changes to the project an updated heritage survey will be conducted in collaboration with representatives of the Wadandi people.

The life of the mine

Once the final mining method is agreed and the environmental impacts are fully assessed and understood, a more accurate estimate of the life of mine will be possible. However, Iluka's general estimate is that the mine would run for up to 15 years including between five and a half years to eight years for construction and mining operations, followed by five to seven years to complete rehabilitation works with monitoring and maintenance activities continuing thereafter.

Land tenure

The land within the development envelope is a mix of mining tenements granted to Iluka under the *Mining Act 1978*. In addition to *Mining Act* tenure, there are private land owners (including Iluka) that occupy land within the development envelope as well as land administered by State and Local Government.



Examples of mineral sands mining, indicative for the Tutunup Mineral Sands Project.



Rehabilitation of mined areas at Tutunup South

Mine rehabilitation, monitoring and maintenance

The Proposal represents a temporary change in the landscape and as required a Mine Closure Plan (MCP), in consultation with stakeholders and in accordance with the *Mining Act 1978*, will be developed and implemented. The MCP will be informed by Iluka's extensive experience successfully rehabilitating, monitoring and maintaining, as required, sites in the south west.

Following the completion of a similar mining operation at Tutunup South, over a three year period, Iluka's rehabilitation team successfully restored agricultural and native vegetation areas, including the Central Wetland. To find out more please visit - www.iluka.com.au/sustainability/environment/biodiversity-rehabilitation



Community and stakeholder engagement

Iluka has been part of the community in the south west for more than 60 years. We value our relationships with key stakeholders and the broader community, and are committed to keeping them informed and seeking their input.

We have already engaged with landowners in the Proposal area, and a number of other stakeholders. Opportunities for the broader community to engage are planned and will be publicised over the coming months.

For more information about the project, or in the meantime, for more information about the Proposal or to engage with Iluka, please visit the project webpage: www.iluka.com/engage/tutunup and subscribe to project updates.

Alternatively, you can contact Iluka on 1800 305 993 or by email at southwest.community@iluka.com